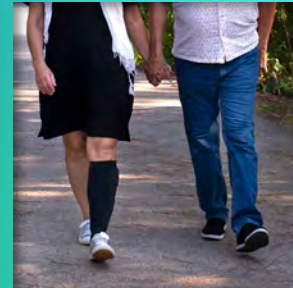


SIGVARIS
GROUP

Compression Solutions



Graduated Compression
Socks & Hosiery for
Veno-Lymphatic Disorders

sigvaris

Why choose Sigvaris compression solutions?

1. Easy to put on

Our hosiery uses double-covered LYCRA® spandex inlay yarns so garments glide on easily.

2. Great fit

Our sizing system has a wide range of sizes for an exceptional fit.

3. Easy to care for

Machine wash and dry makes laundering easy.

4. Quality

We guarantee the compression of our products for six months.

5. Lots of choices

We offer you more choices of materials, colors, and patterns than any other medical compression brand.



Live your life.
Be yourself.

SIGVARIS
GROUP

How to order Medical products

Series Number 23 = Cotton (See individual Catalog pages for series number)	Compression Level 1 = 15–20mmHg 2 = 20–30mmHg* 3 = 30–40mmHg 4 = 40–50mmHg** 5 = 50–60mmHg**	Product Style C = Knee-high or Calf (See individual Catalog pages for available styles)	Size ML = Medium Long (See individual Catalog pages for sizing)	Gender M = Men W = Women O = Open toe	Color 99 = Black (See individual Catalog pages for available colors)
23	2	C	ML	M	99
** 40–50mmHg available in Secure stocking and Natural Rubber; 50–60mmHg available in Natural Rubber only					
To order Plus Calf with Grip-top or Plus Size Pantyhose: add "/P" after the color in the ordering code (860P is available for women only)					
To order Calf Style with Grip-top: add "/S" after the color in the ordering code (see product Catalog pages for availability)					
To order Thigh with Waist Attachment: add "/L" to indicate the Left leg or "/R" to indicate the Right leg after the color in the ordering code (860W and 500W only)					
To order Motion High Tech and Motion Thermoregulating Wool: the letter for Gender is not used in the ordering code. Example: 412CSM59 = Motion High Tech, 20–30mmHg, Closed toe Calf, Size Small Medium, Color Red					

How to order WELL BEING products (see Well Being Lookbook for product selection)

Series Number 120 = SHEER FASHION (See individual Catalog pages for series number)	Product Style N = Thigh-high (See individual Catalog pages for available styles)	Size A = Small (See individual Catalog pages for sizing)	Color 33 = Honey (See individual Catalog pages for available colors)
120	N	A	33
To order ATHLETIC RECOVERY SOCKS, PERFORMANCE SLEEVES, MERINO OUTDOOR SOCKS, and EVERSOFIT DIABETIC SOCKS: Size is only one letter and the letter for Gender is not used in the ordering code. Example: 421CL31 = MERINO OUTDOOR SOCKS, 15–20mmHg, Closed toe Calf, Size Large, Color Olive			

How to Measure

Please follow these instructions carefully to determine the correct size for different product styles.

Measurements should always be taken in the following order, and as soon after waking as possible when swelling is minimal.

CALF STYLE

Open/Closed Toe

1	Measure the ankle circumference at the narrowest part of the ankle, above the ankle bone. Use the appropriate series sizing chart to determine if ankle is SMALL, MEDIUM, LARGE or X-LARGE. Note: This should be your first measurement.
2	Measure the calf circumference at the fullest part of the calf.
3	Determine the calf length by measuring from the floor up to the fibular head. This measurement is taken on the outside of the leg.

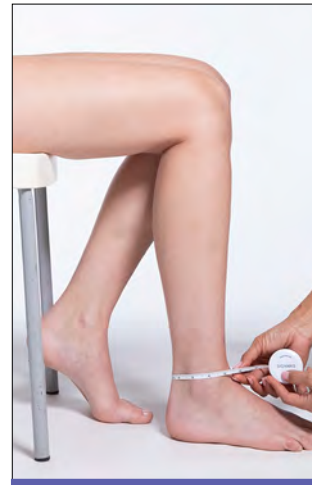
PANTYHOSE AND THIGH-HIGH STYLE

Open/Closed Toe

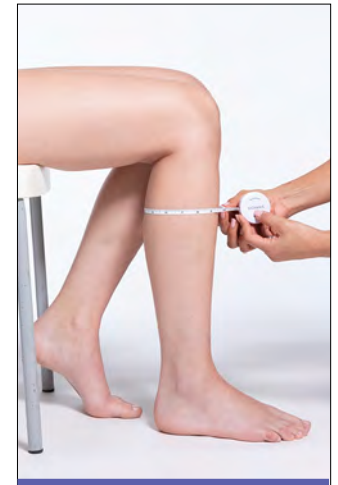
1	Measure the ankle circumference directly above the ankle bone. Use the appropriate series sizing chart to determine if ankle is SMALL, MEDIUM, LARGE, or X-LARGE. Note: This should be your first measurement.
2	Measure the calf circumference at the fullest part of the calf.
3	Skip Step 3 (but refer to General Guidelines #6 below).
4	Measure the thigh at its widest circumference.
5	Determine the leg length by measuring from the floor up to the gluteal fold.
6	Determine the hip circumference by measuring the widest part of the hips.

GENERAL GUIDELINES

1	Measurements should always be taken as soon after waking as possible, when swelling is minimal.
2	Measure against bare skin, not over clothing.
3	The measuring system is based on having the foot flat against the floor and the calf or leg at a right angle to the foot (see images to the right for examples).
4	Measurements should be taken by pulling the tape around the leg so that it is snug but not constricting.
5	Length measurements should be taken from the ground up.
6	Take all measurements, even if the patient only requires calf-length products, as the patient might decide at a later date to purchase additional styles.



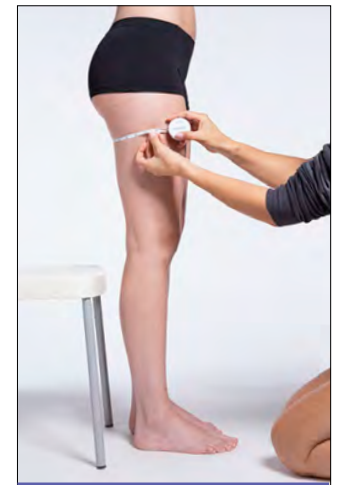
1 Ankle circumference directly above ankle bone



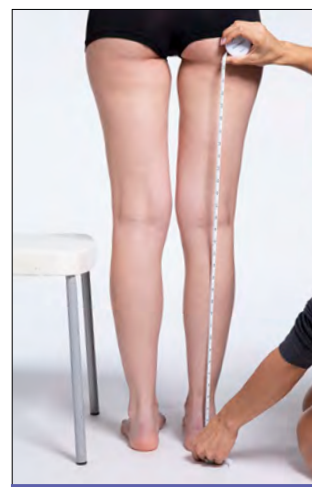
2 Calf circumference at fullest part of the calf



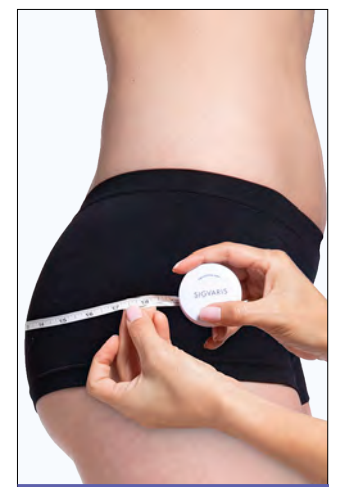
3 Calf length from the floor to the fibular head



4 Widest circumference of the thigh



5 Leg length from the floor up to the gluteal fold



6 Circumference at the hip

SIGVARIS
GROUP

Established in 1864, SIGVARIS GROUP is, and has always been, a family-owned company. Founded and headquartered in Switzerland, our passion for helping people feel their best is why we've been a global market leader for 159 years and counting.

Our products restore, assist, and enhance people's lives through brands like:

sigvaris

Medical Compression Socks, Hosiery,
and Solutions for Medically Complex Edema



We are renowned for making exceptional products that combine advanced technology and quality craftsmanship with diverse styles that fit our modern lives.

When heritage, competence, and dedication come together, there's no limit to where we'll go.

For more information, please visit:

sigvaris.com

Live your life. Be yourself.

	SERIES	PAGE	COMPRESSION LEVELS	STYLES
Essential	Cotton (230)	6	20–30mmHg 30–40mmHg	closed toe: calf, calf w/grip-top, thigh w/grip-top open toe: calf, thigh w/grip-top
	Opaque (860) <i>(for women)</i>	8	20–30mmHg 30–40mmHg	closed toe: calf, petite calf, calf plus, calf w/grip-top, thigh w/grip-top, petite thigh w/grip-top, extra-large thigh w/grip-top, pantyhose, petite pantyhose, plus-sized pantyhose open toe: calf, calf plus, calf w/grip-top, thigh w/grip-top, extra-large thigh w/grip-top, thigh w/waist attachment
	Opaque (860) <i>(for men)</i>	10	20–30mmHg 30–40mmHg	closed toe: calf, calf plus, calf w/grip-top, thigh w/grip-top, extra-large thigh w/grip-top, open toe: calf, calf plus, calf w/grip-top, thigh w/grip-top, extra-large thigh w/grip-top, thigh w/waist attachment
Style	Sea Island Cotton (220)	14	20–30mmHg	closed toe: calf
	Medium Sheer (750) <i>(for women only)</i>	16	20–30mmHg	closed toe: calf, thigh w/grip-top, pantyhose
	Sheer (780) <i>(for women only)</i>	18	15–20mmHg 20–30mmHg 30–40mmHg	closed & open toe: calf, thigh w/grip-top, pantyhose, maternity pantyhose
	Microfiber (820) <i>(for men only)</i>	20	15–20mmHg 20–30mmHg 30–40mmHg	closed toe: calf, calf w/grip-top, thigh w/grip-top, extended foot sizes
	Microfiber Patterns (830)	22	20–30mmHg	closed toe: calf
	Soft Opaque (840) <i>(for women only)</i>	24	15–20mmHg 20–30mmHg 30–40mmHg	closed toe: calf, calf w/grip-top, thigh w/grip-top, pantyhose, maternity pantyhose open toe: calf, thigh w/grip-top, pantyhose
Motion	Cushioned Cotton (360)	28	20–30mmHg	closed toe: calf
	High Tech (412)	30	20–30mmHg	closed toe: calf
	Thermoregulating Wool (422)	32	20–30mmHg	closed toe: calf
Specialty	Natural Rubber (500)	36	30–40mmHg 40–50mmHg 50–60mmHg	open toe: calf, thigh, thigh w/grip-top, thigh w/waist attachment, pantyhose
	Secure (550)	38	20–30mmHg 30–40mmHg 40–50mmHg	closed & open toe: calf w/grip-top, thigh w/ grip-top
	Secure Armsleeve, Glove, and Gauntlet (560)	40	15–20mmHg 20–30mmHg	armsleeve w/ grip-top (glove and gauntlet available separately)
	Diabetic Compression Socks (602)	42	18–25mmHg	closed toe: calf
	Advance Armsleeve (910)	44	15–20mmHg 20–30mmHg	armsleeve w/ grip-top w/ gauntlet, armsleeve w/ grip-top w/out gauntlet

	SERIES	PAGE	COMPRESSION LEVELS	STYLES
Medically Complex Edema	Compreflex® Standard Calf & Foot	50	20–50mmHg	Lower extremity inelastic wrap
	Compreflex Standard Calf	50	20–50mmHg	Lower extremity inelastic wrap
	Compreflex Transition Calf	52	20–50mmHg	Lower extremity inelastic wrap
	Compreflex Complete Calf	52	20–50mmHg	Lower extremity inelastic wrap
	Coolflex® Standard Calf	54	20–50mmHg	Lower extremity inelastic wrap
	Assorted Liners	55		Lower extremity
	Assorted Foot Garments	56		Foot
	Compreflex Strap Extender	57		
Dynaven	Opaque for Women & Men	60	15–20mmHg 20–30mmHg 30–40mmHg	closed toe: calf, calf w/grip-top, thigh w/grip-top, pantyhose open toe: calf, calf w/grip-top, thigh w/grip-top, pantyhose
	Opaque for Men	60	15–20mmHg 20–30mmHg 30–40mmHg	closed toe: calf, calf w/grip-top
	Sheer for Women	62	15–20mmHg 20–30mmHg	closed toe: calf, thigh w/grip-top, pantyhose open toe: calf, thigh w/grip-top
	Cushioned for Women & Men	62	15–20mmHg 20–30mmHg	closed toe: calf
Accessories	Gloves	66		
	Sim-Slide®	66		
	Magnide On / Off®	66		
	Cotton Underliner	67		
	Washing Solution	67		
	IT STAYS!®	67		
	Foot Slip	68		
	Sigvaris DOFF N' DONNER®	68		
	Sigvaris DOFF N' DONNER CONE	68		
	MELANY®	68		

For Sigvaris Well Being products, please see our Well Being Lookbook in the back pocket of this Catalog.

Custom sizes are available for a cotton product, a microfiber product, and our Natural Rubber series.

For more information, please speak with your SIGVARIS GROUP Sales Representative or Customer Care:

1.800.322.7744, ext. 1.





sigvaris

Essential

Support yourself

Why choose **Essential**?

- Everyday comfort and reliability
- Classic look and feel
- Our widest range of sizes

Essential

COTTON 230

Essential Cotton combines a classic ribbed design and all-day cotton comfort that is ideal for sensitive skin.

Compression Level

20–30mmHg

30–40mmHg

Features and Benefits

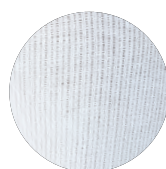
- Supima® cotton for highest level of comfort and breathability
- Ideal for sensitive skin and allergies
- Double-covered inlay yarns provide comfort and allow product to easily glide on and off

Fiber Content

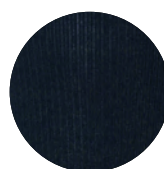
- 50% Nylon, 25% Spandex, 25% Supima Cotton (content may vary slightly by style)
- Non-latex

Best Suited for

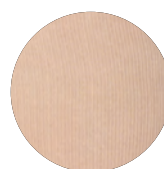
- Containment of various types of edema including venous edema, phlebolympheidema, and early stages of lymphedema
- Ideal for dress or casual shoes
- Ideal for long-distance travel



White



Navy



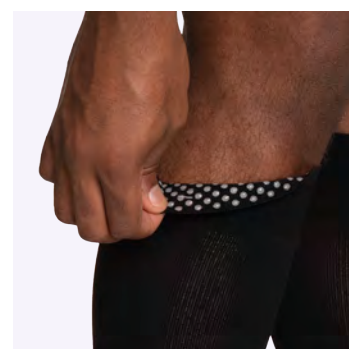
Light Beige



Black



232NSLW66: 20–30mmHg, Closed Toe
Thigh Small Long in Light Beige



Silicone dotted grip-top available
for calf and thigh

Sizing Chart

	Small		Medium		Large		X Large	
Ankle Circumference	7"–8.5" (18–21.5cm)		8.5"–10" (21.5–25.5cm)		10"–11.5" (25.5–29cm)		11.5"–14" (29–36cm)	
Calf Circumference	11"–15.5" (28–39cm)		12.5"–17.5" (31.5–45cm)		14"–20" (35.5–51cm)		16"–24" (41–61cm)	
Calf Length	Short	Long	Short	Long	Short	Long	Short	Long
	≤16" (41cm)	>16" (41cm)	≤16" (41cm)	>16" (41cm)	≤16" (41cm)	>16" (41cm)	≤16" (41cm)	>16" (41cm)
Thigh Circumference	18"–26" (45.5–66cm)		19"–28.5" (48–73cm)		20.5"–33" (52–84cm)		NA	
Leg Length: Women & Open Toe	Short	Long	Short	Long	Short	Long		
	≤28.5" (72cm)	>28.5" (72cm)	≤28.5" (72cm)	>28.5" (72cm)	≤28.5" (72cm)	>28.5" (72cm)		
Leg Length: Men	Short	Long	Short	Long	Short	Long		
	≤30" (76cm)	>30" (76cm)	≤30" (76cm)	>30" (76cm)	≤30" (76cm)	>30" (76cm)		
Size	SS	SL	MS	ML	LS	LL	XS	XL

Women's Shoe Sizes: Short Leg 5.5–9.5, Long Leg 8–12 **Men's Shoe Sizes:** Short Leg 7–11, Long Leg 9.5–14

Styles

Colors

Closed Toe = ●
Open Toe = ○

White
00

Navy
10

**Light
Beige
66**

**Black
99**

Calf (C)	●	●	●●	●
Calf w/Grip-Top (C/S) Silicone band grip-top			●*	●**
Thigh w/Grip-Top (N) Silicone band grip-top			●●	●

* 20–30mmHg only

** 30–40mmHg calf with grip-top only available in Black, 30–40mmHg extra large calf only available in Black with grip-top

Product Code Example: 232CMLM99

Series	mmHg Level	Style	Size	Gender/ Open Toe	Color
23	2	C	ML	M	99

Product Code Example: 232CLSW66/S

Series	mmHg Level	Style	Size	Gender/ Open Toe	Color	Grip-top
23	2	C	LS	W	66	/S

Essential

OPAQUE 860

Essential Opaque offers durability you can trust in our most extensive size range, making it your go-to choice for everyday hosiery. *(For Men's Essential Opaque, see page 10)*

Compression Level

20–30mmHg

30–40mmHg

Features and Benefits

- Double-covered inlay yarns provide comfort and allow product to easily glide on and off
- Cotton-lined gusset for pantyhose styles
- The Pantyhose plus style is a great option during pregnancy

Fiber Content

- 64% Nylon, 36% Spandex
(content may vary slightly by style)
- Non-latex

Best Suited for

- Containment of various types of edema including venous edema, phlebolympheidema, and early stages of lymphedema
- Post-vein treatment including thermal and non-thermal techniques
- Patients looking for petite-sized and plus-sized options



Honey

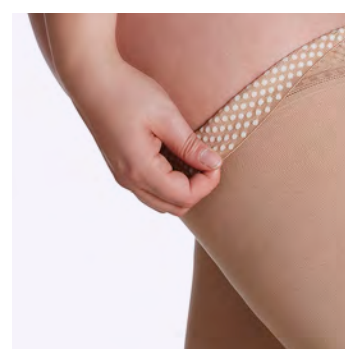
Golden

Light Beige

Black



862CLLW33: 20–30mmHg, Closed Toe
Calf Large Long in Honey



Silicone dotted grip-top available
for calf and thigh

Women's Sizing Chart (for Men's Sizing Chart, see page 11)

	Small			Medium			Large		X Large	
Ankle Circumference	7"–8.5" (18–21.5cm)			8.5"–10" (21.5–25.5cm)			10"–11.5" (25.5–29cm)		11.5"–14" (29–36cm)	
Calf Circumference	11"–15.5" (28–39cm)			12.5"–17.5" (31.5–45cm)			14"–20" (35.5–51cm)		16"–24" (41–61cm)	
Calf Circumference: Calf Plus w/Grip-Top	NA			15.5"–21" (39.5–53cm)			18"–24" (45.5–61cm)		20"–28" (51–71cm)	
Calf Length	Petite	Short	Long	Petite	Short	Long	Short	Long	Short	Long
	≤14" (35.5cm)	≤16" (41cm)	>16" (41cm)	≤14" (35.5cm)	≤16" (41cm)	>16" (41cm)	≤16" (41cm)	>16" (41cm)	≤16" (41cm)	>16" (41cm)
Thigh Circumference	18"–26" (45.5–66cm)			19"–28.5" (48–73cm)			20.5"–33" (52–84cm)		25"–37.5" (64–95cm)	
Leg Length: Women & Open Toe	Petite	Short	Long	Petite	Short	Long	Short	Long	Short	Long
	≤25.5" (65cm)	≤28.5" (72cm)	>28.5" (72cm)	≤25.5" (65cm)	≤28.5" (72cm)	>28.5" (72cm)	≤28.5" (72cm)	>28.5" (72cm)	≤28.5" (72cm)	>28.5" (72cm)
Hip Circumference Guidelines	32.5"–44.5" (83–112.5cm)			34.5"–50" (87–127cm)			38.5"–59.5" (98–150.5cm)		NA	
Size	SP	SS	SL	MP	MS	ML	LS	LL	XS	XL
Calf Plus w/Grip-Top				MS/P		ML/P	LS/P	LL/P	XS/P	XL/P

Women's Shoe Sizes: Petite Leg 4–8, Short Leg 5.5–9.5, Long Leg 8–12

Plus (Maternity) Hip Circumference Guidelines Small ≤56" (142cm), Medium ≤62" (157.5cm), Large ≤70" (178cm)

Women's Styles (for Men's, see page 11)

Colors

Closed Toe = ●
Open Toe = ○

Honey 33 Golden 36 Light Beige 66 Black 99

	Honey 33	Golden 36	Light Beige 66	Black 99
Women's Calf (C)	●	●	○	●●
Women's Calf Petite Sizes (C) Only available in 20–30mmHg, not available with silicone band grip-top	●	●		●
Women's Calf w/Grip-Top (C/S) Silicone band grip-top			●●	●●
Women's Calf Plus w/Grip-Top (C/P) Only available with silicone band grip-top			●●	●●
Women's Thigh w/Grip-Top (N) Silicone band grip-top*	●	●	○	●●
Women's Thigh w/Grip-Top Petite (N) Only available in 20–30mmHg	●	●		●
Women's Pantyhose (P) Not available in XS or XL sizes	●	●		●
Women's Pantyhose Petite (P) Only available in 20–30mmHg	●	●		●
Women's Pantyhose Plus (P/P)			●	●
Thigh w/Waist Attachment (W)** Indicate leg LEFT (/L) or RIGHT (/R)			○	

* Women's Thigh w/Grip-Top (N) and Open Toe Thigh w/Grip-Top (N) sizes XS and XL are only available in Light Beige and Black

** Thigh w/Waist Attachment not available in XL sizes

Product Code Example: 862NSSO99

Series	mmHg Level	Style	Size	Gender/Open Toe	Color
86	2	N	SS	O	99

Product Code Example: 862CLLW66/P

Series	mmHg Level	Style	Size	Gender/Open Toe	Color	Grip-top
86	2	C	LL	W	66	/P

Essential

OPAQUE 860

Essential Opaque offers durability you can trust in our most extensive size range, making it your go-to choice for everyday hosiery. *(For Women's Essential Opaque, see page 8)*

Compression Level

20–30mmHg

30–40mmHg

Features and Benefits

- Double-covered inlay yarns provide comfort and allow product to easily glide on and off
- Men's calf and thigh products feature ribbed fabric; open toe products are a smooth hosiery fabric
- Flat, low friction toe seam

Fiber Content

- 64% Nylon, 36% Spandex
(content may vary slightly by style)
- Non-latex

Best Suited for

- Containment of various types of edema including venous edema, phlebolympheidema, and early stages of lymphedema
- Post-vein treatment including thermal and non-thermal techniques
- Patients looking for plus-sized options



**Ribbed
Light Beige**



**Ribbed
Black**



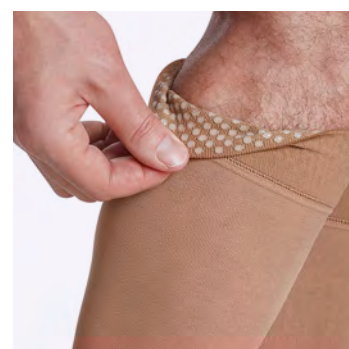
**Smooth
Light Beige**



**Smooth
Black**



862CML099: 20–30mmHg
Open Toe Calf Medium Long in Black



Silicone dotted grip-top available
for calf and thigh

Men's Sizing Chart (for Women's Sizing Chart, see page 9)

	Small		Medium		Large		X Large	
Ankle Circumference	7"-8.5" (18-21.5cm)		8.5"-10" (21.5-25.5cm)		10"-11.5" (25.5-29cm)		11.5"-14" (29-36cm)	
Calf Circumference	11"-15.5" (28-39cm)		12.5"-17.5" (31.5-45cm)		14"-20" (35.5-51cm)		16"-24" (41-61cm)	
Calf Circumference: Calf Plus w/Grip-Top	NA		15.5"-21" (39.5-53cm)		18"-24" (45.5-61cm)		20"-28" (51-71cm)	
Calf Length	Short	Long	Short	Long	Short	Long	Short	Long
	≤16" (41cm)	>16" (41cm)	≤16" (41cm)	>16" (41cm)	≤16" (41cm)	>16" (41cm)	≤16" (41cm)	>16" (41cm)
Thigh Circumference	18"-26" (45.5-66cm)		19"-28.5" (48-73cm)		20.5"-33" (52-84cm)		25"-37.5" (64-95cm)	
Leg Length: Men	Short	Long	Short	Long	Short	Long	Short	Long
	≤30" (76cm)	>30" (76cm)	≤30" (76cm)	>30" (76cm)	≤30" (76cm)	>30" (76cm)	≤30" (76cm)	>30" (76cm)
Leg Length: Open Toe	Short	Long	Short	Long	Short	Long	Short	Long
	≤28.5" (72cm)	>28.5" (72cm)	≤28.5" (72cm)	>28.5" (72cm)	≤28.5" (72cm)	>28.5" (72cm)	≤28.5" (72cm)	>28.5" (72cm)
Size	SS	SL	MS	ML	LS	LL	XS	XL
Calf Plus w/Grip-Top			MS/P	ML/P	LS/P	LL/P	XS/P	XL/P

Men's Shoe Sizes: Short Leg 7-11, Long Leg 9.5-14

Men's Styles (for Women's Styles and Colors, see page 9)

Colors

Closed Toe = ● closed toe men's products are ribbed hosiery
Open Toe = ○ open toe men's products are smooth hosiery

Light
Beige
66

Black
99

	Light Beige 66	Black 99
Men's Calf (C)	●●	●●
Men's Calf w/Grip-Top (C/S) Silicone band grip-top	●●	●●
Men's Calf Plus w/Grip-Top (C/P) Only available with silicone band grip-top	●●	●●
Men's Thigh w/Grip-Top (N) Silicone band grip-top	●●	●●
Thigh w/Waist Attachment (W)* Indicate leg LEFT (/L) or RIGHT (/R)	○	

* Thigh w/Waist Attachment not available in XL sizes

Product Code Example: 863CMSM99

Series	mmHg Level	Style	Size	Gender/ Open Toe	Color
86	3	C	MS	M	99

Product Code Example: 862CLLO66/P

Series	mmHg Level	Style	Size	Gender/ Open Toe	Color	Grip-top
86	2	C	LL	O	66	/P





sigvaris Style

Express yourself

Why choose **Style**?

- Fashionable, modern patterns and designs
- Special occasion and formal wear
- Our most luxurious yarns

Style

SEA ISLAND COTTON 220

Style Sea Island Cotton socks are made with the world's rarest cotton, ensuring a luxurious feel that is as soft as cashmere.

Compression Level

20–30mmHg

Features and Benefits

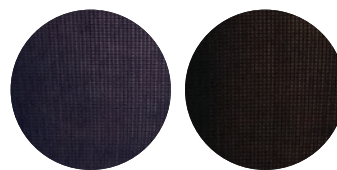
- Knitted with the world's rarest cotton for a soft, luxurious feel
- Ideal for sensitive skin
- Double-covered inlay yarns provide comfort and allow product to easily glide on and off

Fiber Content

- 43% Sea Island Cotton, 39% Nylon, 11% Spandex, 7% Supima Cotton
- Non-latex

Best Suited for

- Management of symptoms related to Chronic Venous Disease (CVD)
- Patients who prefer natural fibers for everyday wear
- Long-distance travel



Navy

Black



222CLLM10: 20–30mmHg, Closed Toe Calf Large Long in Navy



222CMLM99: 20–30mmHg, Closed Toe Calf Medium Long in Black

Sizing Chart

	Small		Medium		Large		X Large	
Ankle Circumference	7"–8.5" (18–21.5cm)		8.5"–10" (21.5–25.5cm)		10"–11.5" (25.5–29cm)		11.5"–14" (29–36cm)	
Calf Circumference	11"–15.5" (28–39cm)		12.5"–17.5" (31.5–45cm)		14"–20" (35.5–51cm)		16"–24" (41–61cm)	
Calf Length	Short	Long	Short	Long	Short	Long	Short	Long
	≤16" (41cm)	>16" (41cm)	≤16" (41cm)	>16" (41cm)	≤16" (41cm)	>16" (41cm)	≤16" (41cm)	>16" (41cm)
Size	SS	SL	MS	ML	LS	LL	XS	XL

Women’s Shoe Sizes: Short Leg 5.5–9.5, Long Leg 8–12 Men’s Shoe Sizes: Short Leg 7–11, Long Leg 9.5–14

Style

Colors

Closed Toe = ●

Navy10

Black99

Calf (C)	●	●

Product Code Example: 222CLSW99

Series	mmHg Level	Style	Size	Gender/ Open Toe	Color
22	2	C	LS	W	99

Style

MEDIUM SHEER 750

Thanks to the durability of Style Medium Sheer, you will have the confidence to wear sheer hosiery every day.

Compression Level

20–30mmHg

Features and Benefits

- Fashionable, durable, medium sheer hosiery for everyday wear
- Double-covered inlay yarns provide comfort and allow product to easily glide on and off
- Cotton-lined gusset for pantyhose styles

Fiber Content

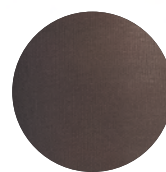
- 68% Nylon, 32% Spandex
(Content may vary slightly by style)
- Non-latex

Best Suited for

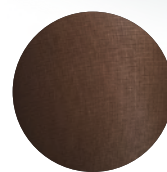
- Management of early stages of Chronic Venous Disease (CVD)
- Pre- and post-vein treatment
- Daily wear for business or casual
- Active professionals needing a durable sheer



Honey



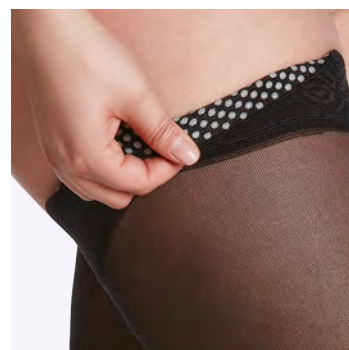
Nightshade



Black



752NMLW99: 20–30mmHg, Closed Toe Thigh Medium Long in Black



Silicone dotted grip-top available on thigh

Sizing Chart

	Small		Medium		Large	
Ankle Circumference	7"–8.5" (18–21.5cm)		8.5"–10" (21.5–25.5cm)		10"–11.5" (25.5–29cm)	
Calf Circumference	11"–15.5" (28–39cm)		12.5"–17.5" (31.5–45cm)		14"–20" (35.5–51cm)	
Calf Length	Short	Long	Short	Long	Short	Long
	≤16" (41cm)	>16" (41cm)	≤16" (41cm)	>16" (41cm)	≤16" (41cm)	>16" (41cm)
Thigh Circumference	18"–26" (45.5–66cm)		19"–28.5" (48–73cm)		20.5"–33" (52–84cm)	
Leg Length	Short	Long	Short	Long	Short	Long
	≤28.5" (72cm)	>28.5" (72cm)	≤28.5" (72cm)	>28.5" (72cm)	≤28.5" (72cm)	>28.5" (72cm)
Hip Circumference Guidelines	32.5"–44.5" (83–112.5cm)		34.5"–50" (87–127cm)		38.5"–59.5" (98–150.5cm)	
Size	SS	SL	MS	ML	LS	LL

Women's Shoe Sizes: Short Leg 5.5–9.5, Long Leg 8–12

Styles

Colors

Closed Toe = ●

Honey
33

Nightshade
94

Black
99

Calf (C)	●	●	●
Thigh w/Grip-Top (N) Silicone band grip-top	●	●	●
Pantyhose (P)	●	●	●

Product Code Example: 752CMLW94

Series	mmHg Level	Style	Size	Gender/ Open Toe	Color
75	2	C	ML	W	94

15-20mmHg

20-30mmHg

30-40mmHg

Style

SHEER 780

Style Sheer hosiery offers fashionable sheerness you can feel comfortable in, making it ideal for dress and professional wear.

Compression Level

15-20mmHg

20-30mmHg

30-40mmHg

Features and Benefits

- Fashionable for professional and dress wear
- Double-covered inlay yarns provide comfort and allow product to easily glide on and off
- Cotton-lined gusset for pantyhose styles
- Available in a diverse range of skin tones

Fiber Content

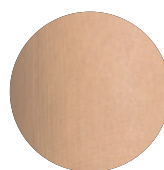
- 15-20, 20-30mmHg: 69% Nylon , 31% Spandex (content can vary slightly by style)
- 30-40mmHg: 60% Nylon , 40% Spandex (content can vary slightly by style)
- Non-latex

Best Suited for

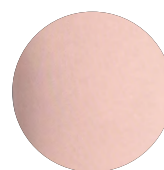
- Management of early stages of Chronic Venous Disease (CVD)
- Pre- and post-vein treatment
- Patients who prefer fashionable options
- Ideal for business or dress



Dark Navy



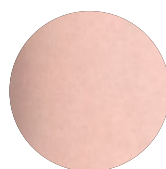
Honey



Warm Sand



Golden



Toasted Almond



Café



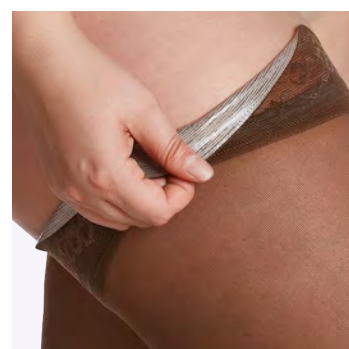
Mocha



Black



781NMLW08: 15-20mmHg, Closed Toe Thigh Medium Long in Dark Navy



Sensinno grip-top available on thigh

Sizing Chart

	Small		Medium		Large	
Ankle Circumference	7"-8.5" (18-21.5cm)		8.5"-10" (21.5-25.5cm)		10"-11.5" (25.5-29cm)	
Calf Circumference	11"-15.5" (28-39cm)		12.5"-17.5" (31.5-45cm)		14"-20" (35.5-51cm)	
Calf Length	Short	Long	Short	Long	Short	Long
	≤16" (41cm)	>16" (41cm)	≤16" (41cm)	>16" (41cm)	≤16" (41cm)	>16" (41cm)
Thigh Circumference	18"-26" (45.5-66cm)		19"-28.5" (48-73cm)		20.5"-33" (52-84cm)	
Leg Length	Short	Long	Short	Long	Short	Long
	≤28.5" (72cm)	>28.5" (72cm)	≤28.5" (72cm)	>28.5" (72cm)	≤28.5" (72cm)	>28.5" (72cm)
Hip Circumference Guidelines	32.5"-44.5" (83-112.5cm)		34.5"-50" (87-127cm)		38.5"-59.5" (98-150.5cm)	
Size	SS	SL	MS	ML	LS	LL

Women's Shoe Sizes: Short Leg 5.5-9.5, Long Leg 8-12

Styles

Colors

Closed Toe = ●
Open Toe = ○

Dark
Navy
08

Honey
33

Warm
Sand
34*

Golden
36

Toasted
Almond
37*

Café
73

Mocha
85

Black
99

	Dark Navy 08	Honey 33	Warm Sand 34*	Golden 36	Toasted Almond 37*	Café 73	Mocha 85	Black 99
Calf (C)	●	●○	●○	●○	●○	●○	●○	●○
Thigh w/Grip-Top (N) Sensinnov band grip-top	●	●○	●○	●○	●○	●○	●○	●○
Pantyhose (P)	●	●○	●○	●○	●○	●○	●○	●○

* 15-20mmHg & 20-30mmHg ONLY

Product Code Example: **781PMSW33**

Series	mmHg Level	Style	Size	Gender/ Open Toe	Color
78	1	P	MS	W	33

Product Code Example: **783PSSO85**

Series	mmHg Level	Style	Size	Gender/ Open Toe	Color
78	3	P	SS	O	85

Style

MICROFIBER 820

Style Microfiber socks offer ribbed microfiber softness for your professional and everyday wear.

Compression Level

15-20mmHg

20-30mmHg

30-40mmHg

Features and Benefits

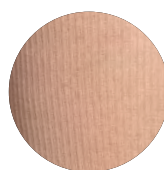
- 100% of the microfiber sits next to skin for a soft feel
- Excellent breathability and moisture management for added comfort
- Double-covered inlay yarns provide comfort and allow product to easily glide on and off

Fiber Content

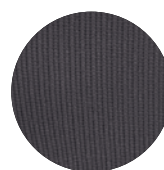
- 87% Nylon , 13% Spandex (Calf)
- 68% Nylon , 32% Spandex (Thigh)
- Non-latex

Best Suited for

- Management of early stages of Chronic Venous Disease (CVD)
- Patients who prefer fashionable options
- Extended foot sizes for men
- Long-distance travel



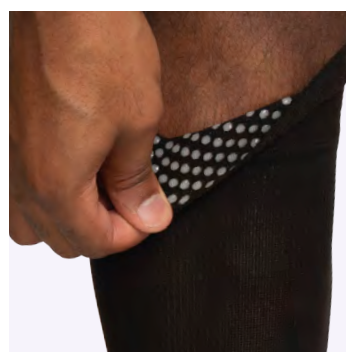
**Tan
Khaki**



**Steel
Grey**



Black



Silicone band grip-top available for calf



Sensinno band grip-top available for thigh

Sizing Chart

	Small		Medium		Large		X Large	
Ankle Circumference	7"-8.5" (18-21.5cm)		8.5"-10" (21.5-25.5cm)		10"-11.5" (25.5-29cm)		11.5"-14" (29-36cm)	
Calf Circumference	11"-15.5" (28-39cm)		12.5"-17.5" (31.5-45cm)		14"-20" (35.5-51cm)		16"-24" (41-61cm)	
Calf Length	Short	Long	Short	Long	Short	Long	Short	Long
	≤16" (41cm)	>16" (41cm)	≤16" (41cm)	>16" (41cm)	≤16" (41cm)	>16" (41cm)	≤16" (41cm)	>16" (41cm)
Thigh Circumference	18"-26" (45.5-66cm)		19"-28.5" (48-73cm)		20.5"-33" (52-84cm)			
Leg Length	Short	Long	Short	Long	Short	Long		
	≤30" (76cm)	>30" (76cm)	≤30" (76cm)	>30" (76cm)	≤30" (76cm)	>30" (76cm)		
Size Shoe size	SS 7-11	SL 9.5-14	MS 7-11	ML 9.5-14	LS 7-11	LL 9.5-14	XS 7-11	XL 9.5-14
				MX* 12.5-17.5		LX* 12.5-17.5		XX* 12.5-17.5

Men's shoe sizes: Short leg 7-11, long leg 9.5-14 (For extended foot sizes: long leg 12.5-17.5)

* MX, LX, and XX extended foot sizes only available in calf style in Black & Tan Khaki in 15-20 & 20-30mmHg only.

Extended foot sizes not available with grip top

Styles

Colors

Closed Toe = ●

**Tan
Khaki
32**

**Steel
Grey
93*****

**Black
99**

	Tan Khaki 32	Steel Grey 93***	Black 99
Calf (C)	●	●	●
Calf w/Grip-Top (C/S)** Silicone band grip-top	●		●
Thigh w/Grip-Top (N)** Sensinnov band grip-top	●		●

** Calf w/ Grip-Top and Thigh w/Grip-top not available in 15-20mmHg

*** Steel Grey color only available in 15-20mmHg and 20-30mmHg

Product Code Example: 822CMLM93

Series	mmHg Level	Style	Size	Gender/ Open Toe	Color
82	2	C	ML	M	93

Style

MICROFIBER PATTERNS 830

Style Microfiber Patterns socks combine ultimate comfort with a variety of fashionable colors and designs to spice up your wardrobe.

Compression Level

20–30mmHg

Features and Benefits

- 100% of microfiber sits next to skin for a soft feel
- Fashionable, durable socks for everyday wear
- Double-covered inlay yarns provide comfort and allow product to easily glide on and off

Fiber Content

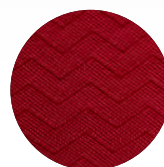
- 87% Nylon, 13% Spandex (content may vary slightly by style)
- Non-latex

Best Suited for

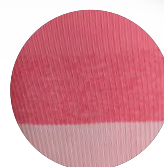
- Management of symptoms related to Chronic Venous Disease (CVD)
- Patients who prefer fashionable options
- Long-distance travel



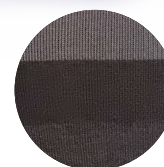
Mariner
Stripe



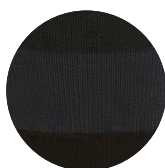
Cranberry
Chevron



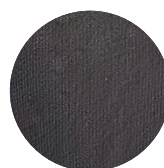
Pink
Stripe



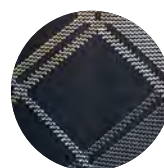
Graphite
Stripe



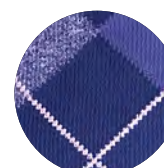
Onyx
Stripe



Graphite
Heather



Black
Plaid



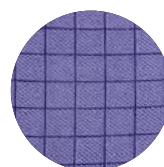
Purple
Argyle



Graphite
Argyle



Royal Blue
Argyle



Wisteria
Windows



Graphite
Chevron



Espresso
Windows



832CMLM48: 20–30mmHg, Closed Toe Calf Medium Long in Royal Blue Argyle



832CLLW15: 20–30mmHg, Closed Toe Calf Large Long in Pink Stripe

Sizing Chart

	Small		Medium		Large	
Ankle Circumference	7"–8.5" (18–21.5cm)		8.5"–10" (21.5–25.5cm)		10"–11.5" (25.5–29cm)	
Calf Circumference	11"–15.5" (28–39cm)		12.5"–17.5" (31.5–45cm)		14"–20" (35.5–51cm)	
Calf Length	Short	Long	Short	Long	Short	Long
	≤16" (41cm)	>16" (41cm)	≤16" (41cm)	>16" (41cm)	≤16" (41cm)	>16" (41cm)
Size	SS	SL	MS	ML	LS	LL

Women's Shoe Sizes: Short Leg 5.5–9.5, Long Leg 8–12 **Men's Shoe Sizes:** Short Leg 7–11, Long Leg 9.5–14

Style

Colors

Closed Toe = ●

**Mariner
Stripe**
02

**Cranberry
Chevron**
05

**Pink
Stripe**
15

**Graphite
Stripe**
17

**Onyx
Stripe**
19

**Graphite
Heather**
27

Calf (C)		●			●	●
Calf (C) for women only	●		●			
Calf (C) for men only				●		

Style

Colors

Closed Toe = ●

**Black
Plaid**
42

**Purple
Argyle**
46

**Graphite
Argyle**
47

**Royal
Blue
Argyle**
48

**Wisteria
Windows**
61

**Espresso
Windows**
89

**Graphite
Chevron**
91

Calf (C)			●	●			●
Calf (C) for women only		●			●		
Calf (C) for men only	●					●	

Product Code Example: 832CMSW61

Series	mmHg Level	Style	Size	Gender/ Open Toe	Color
83	2	C	MS	W	61

15-20mmHg

20-30mmHg

30-40mmHg

Style

SOFT OPAQUE 840

Style Soft Opaque hosiery blends a fashionable opaque look with long-lasting microfiber softness for your professional and everyday wear.

Compression Level

15-20mmHg

20-30mmHg

30-40mmHg

Features and Benefits

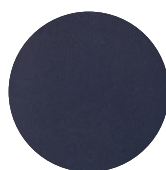
- Fashionable opaque hosiery for professional and everyday wear
- Double-covered inlay yarns provide comfort and allow product to easily glide on and off
- Cotton-lined gusset for pantyhose styles

Fiber Content

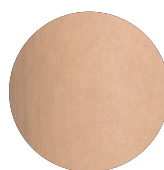
- 74% Nylon , 26% Spandex
(Content may vary slightly by style)
- Non-latex

Best Suited for

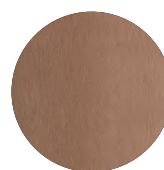
- Management of early stages of Chronic Venous Disease (CVD)
- Pre- and post-vein procedure
- Patients who prefer fashionable options
- Pregnancy
- Long distance travel



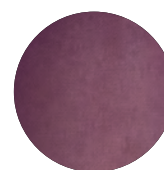
Midnight
Blue



Chai



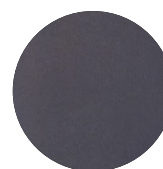
Pecan



Mulberry



Espresso



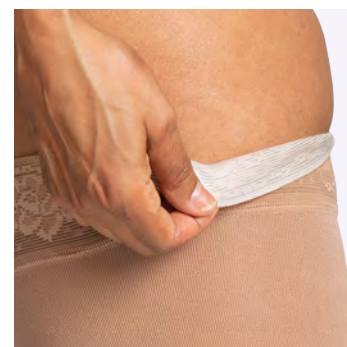
Graphite



Black



842CMLW60: 20-30mmHg, Closed Toe Calf Medium Long in Mulberry



Sensinno band grip-top available for thigh

Sizing Chart

	Small		Medium		Large	
Ankle Circumference	7"–8.5" (18–21.5cm)		8.5"–10" (21.5–25.5cm)		10"–11.5" (25.5–29cm)	
Calf Circumference	11"–15.5" (28–39cm)		12.5"–17.5" (31.5–45cm)		14"–20" (35.5–51cm)	
Calf Length	Short	Long	Short	Long	Short	Long
	≤16" (41cm)	>16" (41cm)	≤16" (41cm)	>16" (41cm)	≤16" (41cm)	>16" (41cm)
Thigh Circumference	18"–26" (45.5–66cm)		19"–28.5" (48–73cm)		20.5"–33" (52–84cm)	
Leg Length	Short	Long	Short	Long	Short	Long
	≤28.5" (72cm)	>28.5" (72cm)	≤28.5" (72cm)	>28.5" (72cm)	≤28.5" (72cm)	>28.5" (72cm)
Hip Circumference Guidelines	32.5"–44.5" (83–112.5cm)		34.5"–50" (87–127cm)		38.5"–59.5" (98–150.5cm)	
Size	SS	SL	MS	ML	LS	LL

Women's Shoe Sizes: Short Leg 5.5–9.5, Long Leg 8–12

Maternity hip circumference guidelines: Small: <56" (142cm), Medium: <62" (157.5cm), Large: <70" (178cm)

Styles

Colors

Closed Toe = ●
Open Toe = ○

**Midnight
Blue
09**

**Chai
35**

**Pecan
40**

**Mulberry
60***

**Espresso
89****

**Graphite
91**

**Black
99**

	Midnight Blue 09	Chai 35	Pecan 40	Mulberry 60*	Espresso 89**	Graphite 91	Black 99
Calf (C)	●	●○	●	●	●	●	●○
Calf w/ Grip-Top (C/S)**							●
Thigh w/Grip-Top (N) Sensinnov band grip-top	●	●○	●	●	●	●	●○
Pantyhose (P)	●	●○	●	●	●	●	●○
Maternity Pantyhose (M)***							●

* 15–20mmHg & 20–30mmHg ONLY

** 20–30mmHg ONLY

*** Maternity styles are only available in 15–20 and 20–30mmHg. They are made to order and shipped in 7–10 business days

Product Code Example: 842NMLW09

Series	mmHg Level	Style	Size	Gender/ Open Toe	Color
84	2	N	ML	W	09

Product Code Example: 842CLLW89

Series	mmHg Level	Style	Size	Gender/ Open Toe	Color
84	2	C	LL	W	89





sigvaris

Motion

Push yourself

Why choose **Motion**?

- Cushioned sole for added comfort
 - Ideal for athletic lifestyle
 - Comfortable for active professions
- 

sigvaris

Motion

CUSHIONED COTTON 360

Motion Cushioned Cotton is soft and breathable with an extra-padded sole for optimal comfort, and is ideal for sensitive skin.

Compression Level

20–30mmHg

Features and Benefits

- Supima cotton for highest level of comfort and breathability
- Extra-padded sole, heel, and toe to protect feet
- Flat, low-friction toe seam

Fiber Content

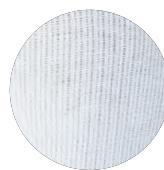
- 64% Supima Cotton , 28% Nylon , 8% Spandex

SUPIMA®
WORLD'S FINEST COTTONS

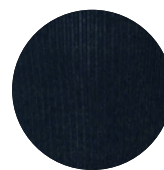
- Non-latex

Best Suited for

- Management of symptoms related to Chronic Venous Disease (CVD)
- People who stand for prolonged periods of time
- Work shoes and boots
- Casual shoes and sports shoes



White



Black



362CMLM00: 20–30mmHg, Closed Toe Calf Medium Long in White



362CSLW99: 20–30mmHg, Closed Toe Calf Small Long in Black

Sizing Chart

	Small		Medium		Large		X Large	
Ankle Circumference	7"–8.5" (18–21.5cm)		8.5"–10" (21.5–25.5cm)		10"–11.5" (25.5–29cm)		11.5"–14" (29–36cm)	
Calf Circumference	11"–15.5" (28–39cm)		12.5"–17.5" (31.5–45cm)		14"–20" (35.5–51cm)		16"–24" (41–61cm)	
Calf Length	Short	Long	Short	Long	Short	Long	Short	Long
	≤16" (41cm)	>16" (41cm)	≤16" (41cm)	>16" (41cm)	≤16" (41cm)	>16" (41cm)	≤16" (41cm)	>16" (41cm)
Size	SS	SL	MS	ML	LS	LL	XS	XL

Women's Shoe Sizes: Short Leg 5.5–9.5, Long Leg 8–12 **Men's Shoe Sizes:** Short Leg 7–11, Long Leg 9.5–14

Style

Colors

Closed Toe = ●

White
00

Black
99

Calf (C)	●	●

Product Code Example: 362CMLM99

Series	mmHg Level	Style	Size	Gender/ Open Toe	Color
36	2	C	ML	M	99

sigvaris

Motion

HIGH TECH 412

Motion High Tech delivers optimal comfort where it counts with an anatomically-contoured shape and a cushioned sole.

Compression Level

20–30mmHg

Features and Benefits

- High-tech fibers for thermal control
- Cushioned footbed, toe, and Achilles tendon zones for optimal comfort
- Additional compression in calf can improve circulation

Fiber Content

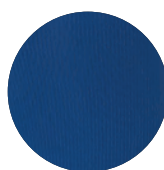
- 64% Nylon, 17% Polyester, 19% Spandex
- Non-latex

Best Suited for

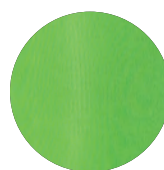
- Management of symptoms related to Chronic Venous Disease (CVD)
- People who stand on their feet all day
- Walking and everyday activities
- Casual and occupational footwear



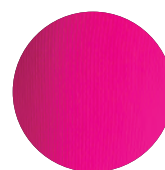
White



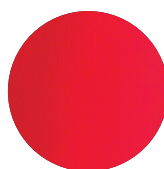
Blue



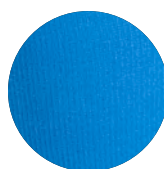
Lime



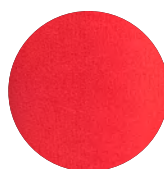
Pink



Red



Steel Blue



Blood
Orange



Limeade



Black



412CSM64: 20–30mmHg, Closed Toe
Calf Small Medium in Limeade



412CML62: 20–30mmHg, Closed Toe
Calf Medium Large in Steel Blue

Sizing Chart

	Small			Medium			Large			X Large		
Ankle Circumference	7"-8.5" (18-21.5cm)			8.5"-10" (21.5-25.5cm)			10"-11.5" (25.5-29cm)			11.5"-13" (29-33cm)		
Calf Circumference	11"-15.5" (28-39cm)			12.5"-17.5" (31.5-45cm)			14"-20" (35.5-51cm)			16"-23" (40.5-58cm)		
Women's Shoe Size	4.5-7.5	8-10.5	11-13.5	4.5-7.5	8-10.5	11-13.5	8-10.5	11-13.5	>14	8-10.5	11-13.5	>14
Men's Shoe Size	≤6.5	7-9.5	10-12.5	≤6.5	7-9.5	10-12.5	7-9.5	10-12.5	13-15.5	7-9.5	10-12.5	13-15.5
Size	SS	SM	SL	MS	MM	ML	LS	LM	LL	XS	XM	XL

Style

Colors

Closed Toe = ●

White
00

Blue
50

Lime
54

Pink
56

Red
59

Steel
Blue
62

Blood
Orange
63

Limeade
64

Black
99

	White 00	Blue 50	Lime 54	Pink 56	Red 59	Steel Blue 62	Blood Orange 63	Limeade 64	Black 99
Calf (C)	●	●	●	●	●	●	●	●	●

Product Code Example: 412CML59

Series	mmHg Level	Style	Size	Color
41	2	C	ML	59

Motion

THERMOREGULATING WOOL 422

Motion Thermoregulating Wool combines the benefits of natural Merino wool with cushioned soles, making it ideal for wherever the road takes you!

Compression Level

20–30mmHg

Also available in 15–20mmHg, see Well Being Lookbook

Features and Benefits

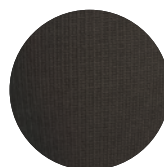
- Merino wool is softer and thinner than regular wool
- Wool fibers naturally help regulate body temperature and transport sweat away from the skin
- Natural properties of wool make these socks odor resistant
- Cushioned, padded soles may prevent blisters

Fiber Content

- 67% Fine Merino Wool, 26% Nylon, 7% Spandex
- Non-latex

Best Suited for

- Management of symptoms related to Chronic Venous Disease (CVD)
- People who stand on their feet all day
- Work boots, steel-toed shoes, and other occupational footwear
- Adventurers, Hikers, Campers, Craftsman, and Gardeners



Charcoal



Olive



422CLL12: 20–30mmHg, Closed Toe Calf Large Large in Charcoal



422CMM31: 20–30mmHg, Closed Toe Calf Medium Medium in Olive

Sizing Chart

	Small			Medium			Large		
Ankle Circumference	7"–8.5" (18–21.5cm)			8.5"–10" (21.5–25.5cm)			10"–11.5" (25.5–29cm)		
Calf Circumference	11"–15.5" (28–39cm)			12.5"–17.5" (31.5–45cm)			14"–20" (35.5–51cm)		
Women's Shoe Size	4.5–7.5	8–10.5	11–13.5	4.5–7.5	8–10.5	11–13.5	8–10.5	11–13.5	>14
Men's Shoe Size	≤6.5	7–9.5	10–12.5	≤6.5	7–9.5	10–12.5	7–9.5	10–12.5	13–15.5
Size	SS	SM	SL	MS	MM	ML	LS	LM	LL

Style

Colors

Closed Toe = ●

Charcoal
12

Olive
31

Calf (C)	●	●

Product Code Example: 422CLL31

Series	mmHg Level	Style	Size	Color
42	2	C	LL	31





sigvaris

Specialty

Take care of yourself

Why choose **Specialty**?

Created for specific medical needs, including:

- Venous conditions
- Wound care management
- Lymphedema support
- Diabetes needs

Specialty

NATURAL RUBBER 500

Natural Rubber offers patients a durable, long-term containment solution for compression therapy with minimal fiber fatigue throughout the day.

Compression Level

30–40mmHg

40–50mmHg

50–60mmHg

Features and Benefits

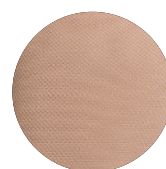
- Ideal for patients with medical concerns
- Extended sizing for a custom-like fit

Fiber Content

- 70% Nylon, 30% Natural Latex Rubber (Calf & Thigh styles)
- 75% Nylon, 20% Natural Latex Rubber, 5% other fibers (Panty hose style)
- **Caution:** contains natural rubber latex that may cause allergic reaction

Best Suited for

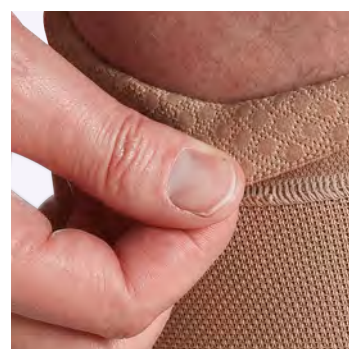
- Varicosities
- Chronic edema
- Venous stasis
- Early stages of lymphedema
- Active venous ulcers



Beige



504CM3077: 40–50mmHg, Open Toe Calf Medium Full Short in Beige



Silicone dotted grip-top available for thigh

Sizing Chart

	Small				Medium				Large				X Large			
Ankle Circumference	7.5"–9" (19–23cm)				9"–12" (23–30cm)				12"–15.5" (30–40cm)				15.5"–18" (40–46cm)			
Calf Circumference	Average		Full		Average		Full		Average		Full		Average		Full	
	11"–15" (28–38cm)		≤17" (≤43cm)		12.5"–17" (32–43cm)		≤19" (≤48cm)		14.5"–19" (36–48cm)		≤22.5" (≤57cm)		18"–22.5" (45–57cm)		≤27" (≤68cm)	
Calf Circumference for 505C (Full only)	505C: full calf only		12.5"–17" (32–43cm)		505C: full calf only		14.5"–19" (36–48cm)		505C: full calf only		18"–22.5" (45–57cm)		505C: not available in XL			
Calf Length	Short	Long	Short	Long	Short	Long	Short	Long	Short	Long	Short	Long	Short	Long	Short	Long
	≤15.5" (40cm)	>15.5" (40cm)	≤15.5" (40cm)	>15.5" (40cm)	≤15.5" (40cm)	>15.5" (40cm)	≤15.5" (40cm)	>15.5" (40cm)	≤15.5" (40cm)	>15.5" (40cm)	≤15.5" (40cm)	>15.5" (40cm)	≤15.5" (40cm)	>15.5" (40cm)	≤15.5" (40cm)	>15.5" (40cm)
Thigh Circumference	Average		Full		Average		Full		Average		Full		Custom sizes available. Please contact Customer Care for details.			
	16"–21" (41–54cm)		≤24" (61cm)		19"–24" (48–61cm)		≤28" (71cm)		23"–28" (58–71cm)		≤32" (81cm)					
Thigh Circumference for 505T (Full only)	505T: full only		≤24" (61cm)		505T: full only		≤28" (71cm)		505T: full only		≤32" (81cm)					
Leg Length	Short	Long	Short	Long	Short	Long	Short	Long	Short	Long	Short	Long				
	≤28" (71cm)	>28" (71cm)	≤28" (71cm)	>28" (71cm)	≤28" (71cm)	>28" (71cm)	≤28" (71cm)	>28" (71cm)	≤28" (71cm)	>28" (71cm)	≤28" (71cm)	>28" (71cm)				
Hip Circumference Guidelines	≤48" (122cm)				≤54" (137cm)				≤61" (155cm)							
Size	S1	S2	S3	S4	M1	M2	M3	M4	L1	L2	L3	L4	X1	X2	X3	X4

Styles

Open Toe = **O**

Caution: this product contains natural rubber latex which may cause allergic reactions. For all indications, cautions, and contraindications, please see page 70 for details. Sigvaris accepts no liability for non-observance of contraindications or cautions.

**Beige
77**

Calf (C)	Calf only available in S, M, and L full circumference for 50-60mmHg	O
Thigh w/out Grip-Top (T)		O
Thigh w/Grip-Top (N) Silicone band grip-top	Not available in 50-60mmHg	O
Pantyhose (P)	Pantyhose only available in 30-40mmHg and only in full thigh circumference	O
Thigh w/Waist Attachment (W) Indicate leg LEFT (/L) or RIGHT (/R)	Thigh w/ waist attachment is available in average and full thigh circumferences in 30-40mmHg and in full thigh circumferences only in 40-50mmHg	O

Product Code Example: **504CS2077**

Series	mmHg Level	Style	Size	Gender/ Open Toe	Color
50	4	C	S2	O	77

Product Code Example: **503WL1077/L**

Series	mmHg Level	Style	Size	Gender/ Open Toe	Color	Leg
50	3	W	L1	O	77	/L

sigvaris

Specialty

SECURE 550

Secure combines compression and containment with comfort and durability that's optimal for comfortably managing advanced venous edema, lymphedema, and wound care.

Compression Level

20–30mmHg

30–40mmHg

40–50mmHg*

Features and Benefits

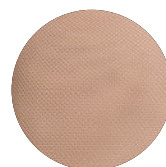
- More graduated compression and containment than other traditional garments
- Durable double-covered inlay yarns allow comfortable all-day wear

Fiber Content

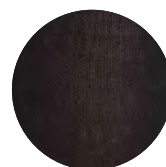
- 78% Nylon, 22% Spandex (Calf style)
- 76% Nylon, 24% Spandex (Thigh style)
- Non-latex

Best Suited for

- Chronic Venous Insufficiency (CVI)¹
- Lymphedema that is well-managed
- Lipedema
- Varicosities
- Deep vein thrombosis (DVT)
- Superficial phlebitis
- Post-thrombotic syndrome
- Orthostatic hypotension
- People with sensitivity to latex



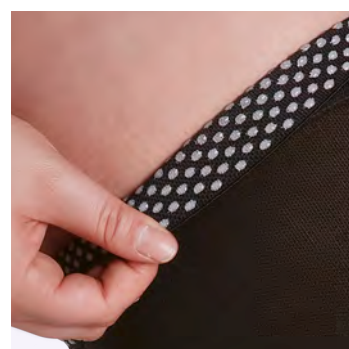
Beige



Black



554NM4W77: 40–50mmHg, Closed Toe Thigh Medium Full Long in Beige



Silicone dotted grip-top on calf and thigh

Sizing Chart

	Medium				Large				X Large				XX Large			
Ankle Circumference	8.5"-10" (21.5-25.5cm)				10"-11.5" (25.5-29cm)				11.5"-13" (29-33cm)				13"-14.5" (33-37cm)			
Calf Circumference	Average		Full		Average		Full		Average		Full		Average		Full	
	12"-17.5" (31-45cm)		17.5"-23" (45-59cm)		13.5"-19" (35-49cm)		19"-25" (49-63cm)		16"-22" (41-56cm)		22"-28" (56-71cm)		17.5"-23" (45-59cm)		23"-29" (59-74cm)	
Calf Length	Short	Long	Short	Long	Short	Long	Short	Long	Short	Long	Short	Long	Short	Long	Short	Long
	≤16" (41cm)	>16" (41cm)	≤16" (41cm)	>16" (41cm)	≤16" (41cm)	>16" (41cm)	≤16" (41cm)	>16" (41cm)	≤16" (41cm)	>16" (41cm)	≤16" (41cm)	>16" (41cm)	≤16" (41cm)	>16" (41cm)	≤16" (41cm)	>16" (41cm)
Thigh Circumference	Average		Full		Average		Full		Average		Full		Average		Full	
	20"-27" (51-69cm)		23.5"-31" (60-78cm)		24"-30" (61-77cm)		26.5"-34" (68-86cm)		27"-33.5" (69-85cm)		30"-37" (76-94cm)		29.5"-36.5" (75-93cm)		33"-40" (84-102cm)	
Leg Length	Short	Long	Short	Long	Short	Long	Short	Long	Short	Long	Short	Long	Short	Long	Short	Long
	≤28.5" (72cm)	>28.5" (72cm)	≤28.5" (72cm)	>28.5" (72cm)	≤28.5" (72cm)	>28.5" (72cm)	≤28.5" (72cm)	>28.5" (72cm)	≤28.5" (72cm)	>28.5" (72cm)	≤28.5" (72cm)	>28.5" (72cm)	≤28.5" (72cm)	>28.5" (72cm)	≤28.5" (72cm)	>28.5" (72cm)
Size	M1	M2	M3	M4	L1	L2	L3	L4	X1	X2	X3	X4	G1	G2	G3	G4

Women's Shoe Sizes: Short Leg 5.5-9.5, Long Leg 8-12 Men's Shoe Sizes: Short Leg 7-11, Long Leg 9.5-14

Styles

Colors

Closed Toe = ●
Open Toe = ○

Beige
77

Black
99

Calf w/Grip-Top (C/S) Silicone band grip-top	●●	●●
Thigh w/Grip-Top (N) Silicone band grip-top	●●	●●

Product Code Example: **552CM2W77/S**

Series	mmHg Level	Style	Size	Gender/ Open Toe	Color	Grip-top
55	2	C	M2	W	77	/S

Specialty **SECURE ARMSLEEVE, GLOVE, AND GAUNTLET 560**

The Secure Armsleeve combines compression and containment with comfort and durability that's optimal for managing lymphedema.

Compression Level

15–20mmHg

20–30mmHg

Features and Benefits

- More graduated compression and containment than traditional garments
- Full-fingered Glove and Gauntlet available
- Provides UPF 50+ sun protection

Fiber Content

- 78% Nylon, 22% Spandex (Armsleeve)
- 60% Nylon, 40% Spandex (Glove, Gauntlet)
- Non-latex

Best Suited for

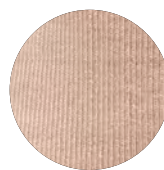
- Chronic edema
- Lymphedema that is well-managed
- Post-operative edema
- Post-mastectomy care



Silicone band grip-top



Dusty Rose



Beige



Cocoa



Black



562GM78: Gauntlet Medium in Beige



562FM78: Glove Medium in Beige

Specialty

SECURE ARMSLEEVE, GLOVE, AND GAUNTLET 560

Sizing Chart Arm

	Small				Medium				Large				X Large				XX Large			
Wrist	5.5"–6.5" (14–16cm)				6.5"–7" (16–18cm)				7"–8" (18–20cm)				8"–9" (20–23cm)				9"–10" (23–26cm)			
Elbow	Average		Full		Average		Full		Average		Full		Average		Full		Average		Full	
	8"–10" 20–26cm		10"–13.5" 26–34cm		9"–11.5" 23–29cm		11.5"–14.5" 29–37cm		10"–12.5" 26–32cm		12.5"–15.5" 32–40cm		11.5"–13.5" 29–34cm		13.5"–16.5" 34–42cm		12.5"–14.5" 32–37cm		14.5"–17.5" 37–45cm	
Upper Arm	Average		Full		Average		Full		Average		Full		Average		Full		Average		Full	
	10"–13.5" 26–34cm		13.5"–15.5" 34–40cm		11.5"–14.5" 29–37cm		14.5"–17" 37–43cm		12.5"–15.5" 32–40cm		15.5"–18" 40–46cm		13.5"–16.5" 34–42cm		16.5"–19" 42–48cm		14.5"–17.5" 37–45cm		17.5"–20.5" 45–52cm	
Arm Length	Short	Long	Short	Long	Short	Long	Short	Long	Short	Long	Short	Long	Short	Long	Short	Long	Short	Long	Short	Long
	≤17" (43cm)	>17" (43cm)	≤17" (43cm)	>17" (43cm)	≤17" (43cm)	>17" (43cm)	≤17" (43cm)	>17" (43cm)	≤17" (43cm)	>17" (43cm)	≤17" (43cm)	>17" (43cm)	≤17" (43cm)	>17" (43cm)	≤17" (43cm)	>17" (43cm)	≤17" (43cm)	>17" (43cm)	≤17" (43cm)	>17" (43cm)
Size	S1	S2	S3	S4	M1	M2	M3	M4	L1	L2	L3	L4	X1	X2	X3	X4	G1	G2	G3	G4

Sizing Chart Hand

	X Small		Small		Medium		Large		X Large		XX Large	
Palm Circumference	6"–6.5" (16–17cm)		7"–7.5" (18–19cm)		8"–8.5" (20–21cm)		8.5"–9" (22–23cm)		9.5"–10" (24–25cm)		10.5"–11" (26–28cm)	
Size	XS		S		M		L		XL		G	

Styles

Colors

Sleeve, Glove, and Gauntlet = ●

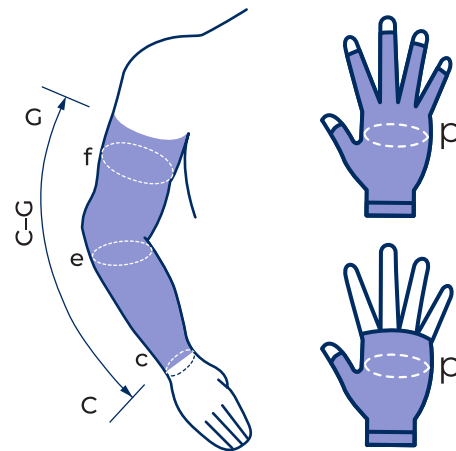
Dusty Rose 65

Beige 78

Cocoa 84

Black 99

	Dusty Rose 65	Beige 78	Cocoa 84	Black 99
Armsleeve (A)	●	●	●	●
Glove (F)	●	●	●	●
Gauntlet (G)	●	●	●	●



Armsleeve

Product Code Example: **561AL265**

Series	mmHg Level	Style	Size	Color
56	1	A	L2	65

Glove

Product Code Example: **562FM78**

Series	mmHg Level	Style	Size	Color
56	2	F	M	78

Gauntlet

Product Code Example: **562GM78**

Series	mmHg Level	Style	Size	Color
56	2	G	M	78

sigvaris

Specialty

DIABETIC COMPRESSION SOCKS 602

Diabetic Compression Socks are the only patented, clinically-proven graduated compression socks constructed for people with diabetes.

Compression Level

18–25mmHg

Also available in 8–15mmHg, see Well Being Lookbook

Features and Benefits

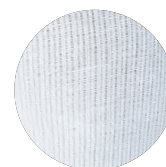
- Padded soles and invisible toe seam add comfort and protection
- Compression-free foot for optimum comfort
- Double-covered inlay yarns provide comfort and allow product to easily glide on and off
- *drirelease*® yarns add moisture wicking properties

Fiber Content

- 76% *drirelease* (65% Polyester, 11% Cotton), 19% Nylon, 5% Spandex
- Non-latex

Best Suited for

- Individuals with diabetes and symptoms related to Chronic Venous Disease (CVD)
- Individuals with peripheral neuropathy
- Patients with an ABI of >0.6



White



602CSSW00: 18–25mmHg, Closed Toe Calf Small Short in White



Padded soles and invisible toe seam add comfort and protection

Sizing Chart

	Small		Medium		Large		X Large	
Ankle Circumference	7"-8.5" (18-21.5cm)		8.5"-10" (21.5-25.5cm)		10"-11.5" (25.5-29cm)		11.5"-14" (29-36cm)	
Calf Circumference	11"-15.5" (28-39cm)		12.5"-17.5" (31.5-45cm)		14"-20" (35.5-51cm)		16"-24" (41-61cm)	
Calf Length	Short	Long	Short	Long	Short	Long	Short	Long
	≤16" (41cm)	>16" (41cm)	≤16" (41cm)	>16" (41cm)	≤16" (41cm)	>16" (41cm)	≤16" (41cm)	>16" (41cm)
Size	SS	SL	MS	ML	LS	LL	XS*	XL*

Women's Shoe Sizes: Short Leg 5.5-9.5, Long Leg 8-12 Men's Shoe Sizes: Short Leg 7-11, Long Leg 9.5-14

*XS & XL Only Available In Men's Sizing

Style	Color
-------	-------

Closed Toe = ●

White
00

Calf (C)	●

Product Code Example: 602CMLM00

Series	mmHg Level	Style	Size	Gender/ Open Toe	Color
60	2	C	ML	M	00

sigvaris

Specialty

ADVANCE ARMSLEEVE 910

The Advance Armsleeve combines ultimate softness with silver ion properties and a Sensinnov grip-top band that's ideal for all-day comfort and effectiveness.

Compression Level

15–20mmHg

20–30mmHg

Features and Benefits

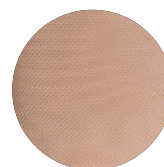
- Ideal for patients with arm lymphedema or post-mastectomy care
- Sensinnov top-band ensures armsleeve stays in place all day long
- Provides moisture wicking properties to keep skin dry and comfortable
- Breathable to provide comfortable, year-round wear

Fiber Content

- 50% Nylon, 28% Rayon, 22% Spandex
(Content may vary slightly by style)
- Non-latex

Best Suited for

- Chronic edema
- Early stages of lymphedema
- Venous ulcers



Beige



912ASLG77/S: 20–30mmHg Armsleeve with Gauntlet in Beige



Sensinnov band grip-top for Armsleeves

Sizing Chart

	Small		Medium				Large				X Large			
Palm	6.5"-8" (17-21cm)		7"-8.5" (18-22cm)				7.5"-9" (19-23cm)				8"-9.5" (20-24cm)			
Wrist	5.5"-6.5" (14-16cm)		6.5"-7" (16-18cm)				7"-8" (18-20cm)				8"-9" (20-23cm)			
Upper Mid-Arm	Regular		Regular		Plus		Regular		Plus		Regular		Plus	
	10"-13.5" 26-34cm		11.5"-14.5" 29-37cm		14.5"-17" 37-43cm		12.5"-15.5" 32-40cm		15.5"-18" 40-46cm		13.5"-16.5" 34-42cm		16.5"-19" 42-48cm	
Arm Length	Regular	Long	Regular	Long	Regular	Long	Regular	Long	Regular	Long	Regular	Long	Regular	Long
	≤17" (43cm)	>17" (43cm)	≤17" (43cm)	>17" (43cm)	≤17" (43cm)	>17" (43cm)	≤17" (43cm)	>17" (43cm)	≤17" (43cm)	>17" (43cm)	≤17" (43cm)	>17" (43cm)	≤17" (43cm)	>17" (43cm)
Size	SR	SL	MR	ML	MR/P	ML/P	LR	LL	LR/P	LL/P	XR	XL	XR/P	XL/P

Styles

Color

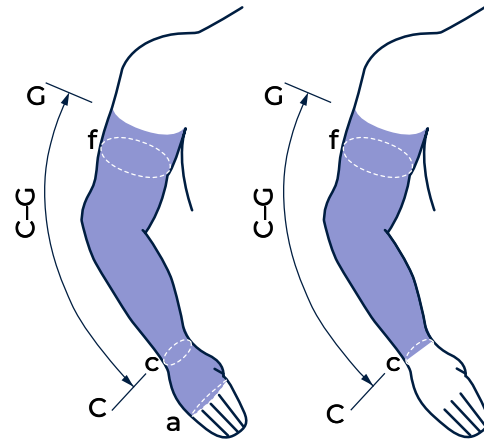
Sleeve = ●

Beige
77

Style	Color
Armsleeve w/ Gauntlet (A) Sensinnov band grip-top	●
Armsleeve w/out Gauntlet (A) Sensinnov band grip-top	●

Note: all armsleeves come with Grip-top (/S)

15-20mmHg not available with gauntlet and not available in plus sizing



Armsleeve with gauntlet

Product Code Example: **912ALRG77/PS**

Series	mmHg Level	Style	Size	W/ Gauntlet	Color	Plus Size	Grip-Top
91	2	A	LR	G	77	/P	S

Armsleeve without gauntlet

Product Code Example: **912ASLO77/S**

Series	mmHg Level	Style	Size	W/out Gauntlet	Color	Grip-Top
91	2	A	SL	O	77	/S





sigvaris

Medically Complex Edema

The SIGVARIS GROUP line of products for Medically Complex Edema (MCE) are for the treatment and management of conditions impacting the lymphatic and venous circulatory systems.

The product portfolio contains ready-to-wear garments for the active treatment and maintenance of lymphedema and for patients managing chronic venous diseases in the upper and lower extremities.

A sampling of these products is included in the following pages.

For more details and to request a complete MCE catalog, please ask your local SIGVARIS GROUP Territory Manager or email **sigvariscares@sigvaris.com**.

Measuring Guide for Lower Inelastic Compression

Patient Name: _____ Phone #: _____ Date: _____
 Patient Address: _____ City: _____ State: _____ Zip: _____
 Prescribing Doctor's Name (Printed): _____
 NPI #: _____ Phone #: _____
 Doctor Signature: _____ ICD 10 Diagnosis Code: _____

Body Part*

☐ Calf ☐ Knee ☐ Foot

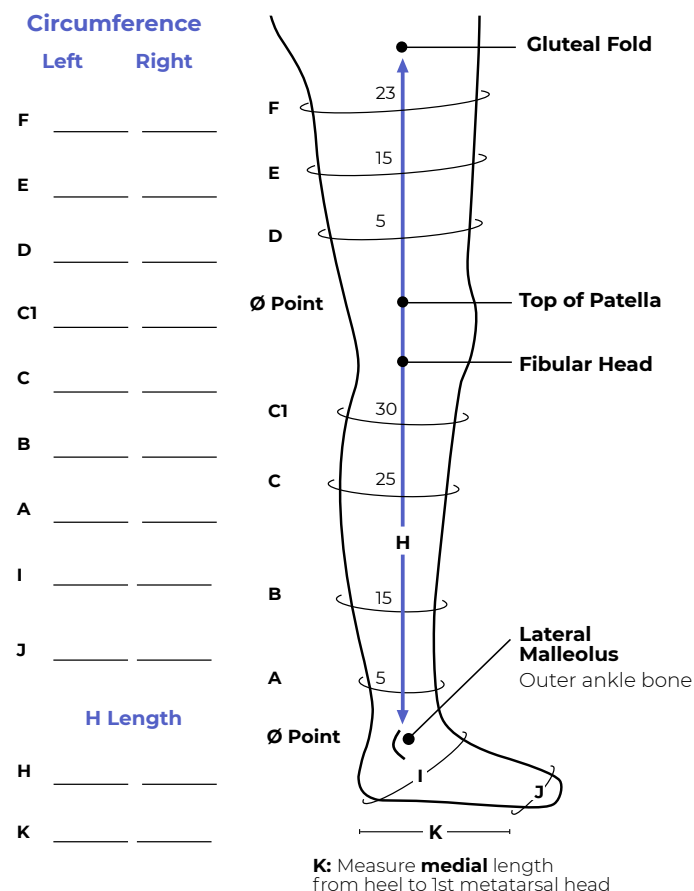
Inelastic Wraps

☐ Compreflex ☐ Coolflex ☐ Compreboot
☐ Light ☐ Standard ☐ Plus

Product style types may vary, please see the 2023 Sigvaris Catalog of Compression Solutions for Veno-Lymphatic Disorders for more information or call the US Customer Care Solution Center. Available Monday–Friday, 8am–7pm EST at **1.800.322.7744, ext. 1**.

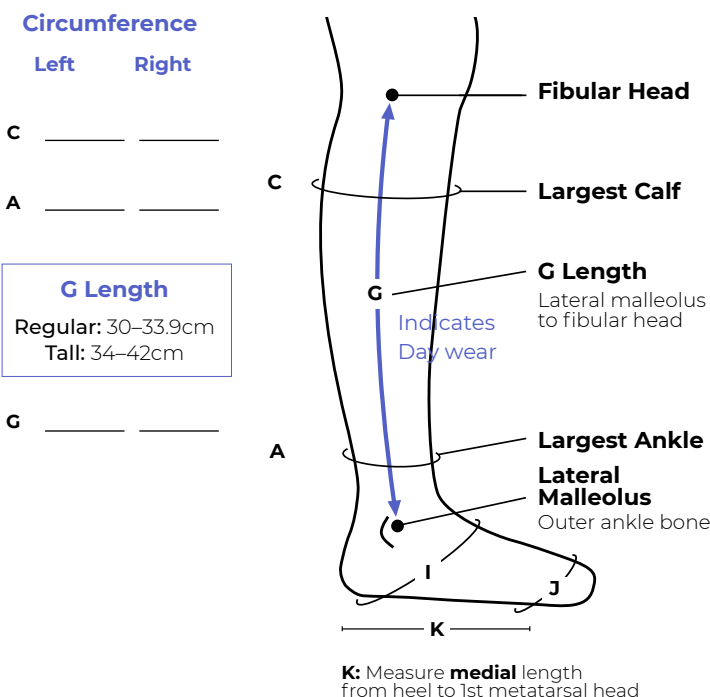
Inelastic Wrap:

Lower Extremity Measurements



Inelastic Wrap:

Compreflex Calf Garment Measurements



For a PDF of the product ordering form, scan the QR code or visit sigvaris.group/mceforms

Note: on the following pages, these icons indicate options for time of wear.



Indicates Day wear



Indicates Night wear

*Measure point letter may vary with inelastic garments, please see the 2023 Sigvaris Catalog of Compression Solutions for Veno-Lymphatic Disorders for a product specific point.

Medically Complex Edema

MEASURING INSTRUCTIONS



Precise measurements are essential to guarantee the indicated level of compression and to ensure a proper fit. The measuring instructions included in the following pages are designed for your understanding.

The measurement chart and graphic for each product is also included on corresponding product specific order form that can be found online at: sigvaris.group/en-us/expertise/download-center

For additional guidance with measuring or fitting of a garment, please contact the Customer Care Solution Center, available Monday–Friday, 8am–7pm at **1.800.322.7744**, ext. 1.

CALF & FOOT

Circumferences:

For Compreflex Calf garments, measure circumferences where indicated on the measurement chart at the largest ankle and largest calf. Measurements may be recorded on the corresponding lines A and C.

For all other Calf garments, measure circumferences where indicated on the measurement chart, beginning with the dot 5cm above the **Lateral Malleolus** (outer ankle bone), continue to the 15cm, 25cm, and 30cm dots. Measurements may be recorded on the corresponding lines A, B, C, C (left/right).

Length:

Measure length from the **Lateral Malleolus** (outer ankle bone) to lateral aspect of the **Fibular Head**. Measurements may be recorded on the box G.

Foot:

Measure circumference of ankle bend and heel and record on line I. Measure circumference across metatarsal heads and record on line J. Measure length on medial side of foot from heel to 1st metatarsal head and record on line K.



Measurement tips

- 1 When working with a patient tasked with self-measuring, it is best to provide the measuring graphic (included in this guide) as a visual guide. Studies also show that the use of medical terminology may be confusing and even frightening for the patient. For the best result, limit the use of medical terminology.
- 2 Remind your patient, the tape or measurement tool should be held taut against the skin but should not dent the skin.
- 3 If patient has a caregiver or companion, it may be best to involve them for the placement of the tape or the reading of the measurements.
- 4 Using a body marking pen or makeup pencil may also help with recording landmarks on the limb for future reference.
- 5 Do not mark on fragile or broken skin.

Compreflex Standard **CALF & FOOT**

20–50mmHg



Colors



Black

Beige

When to Use

- Adjustable ranges of resting compression are desired (20–50mmHg)
- Non-attached foot piece is desired
- No compression in the liner is desired
- Patient requires a calf and foot garment

Ideal for

- Chronic Venous Disease
- Chronic Venous Insufficiency (CVI) including, but not limited to, ulcer due to venous stasis
- Lymphedema - Active and Maintenance
- Non-specific or post-surgical edema



Compreboot® Standard

Variable compression
(see page 56 for details)



Basic Liner

Non-Compressive
(see page 55 for details)



Accutab® Devices

Accutab Devices
(visit website for details)



Compreflex Standard **CALF**

20–50mmHg



Colors



Black

Beige

When to Use

- Varying ranges of adjustable resting compression are desired (20–50mmHg)
- No compression in the liner is desired
- No Compreboot needed
- Patient requires compression in the calf only or a different foot option (size or boot)
- Ability to wear standard footwear over liner is desired

Ideal for

- Chronic Venous Disease
- Chronic Venous Insufficiency (CVI) including, but not limited to: ulcer due to venous stasis
- Lymphedema - Active and Maintenance
- Non-specific or post-surgical edema



Basic Liner

Non-Compressive
(see page 55 for details)



Accutab® Devices

Accutab Devices
(visit website for details)



Medically Complex Edema

COMPREFLEX WRAPS



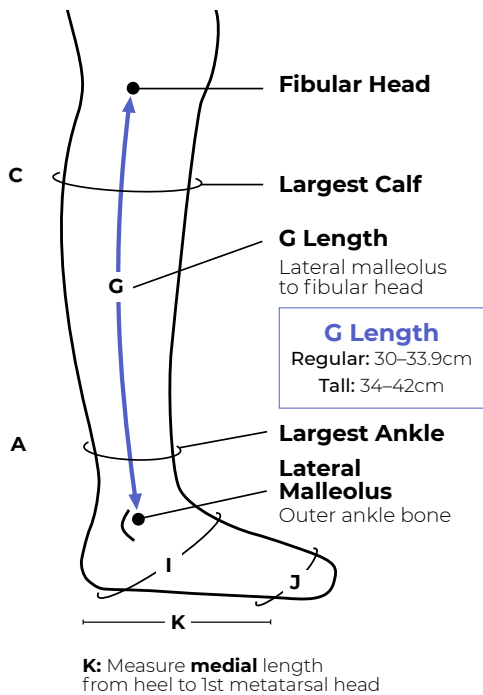
Variable compression Compreboot for added foot and ankle compression (see page 56 for details)

Compreflex Standard Calf & Foot Sizing Chart

		Small	Medium	Large	X Large	XX Large
C		29–39cm	34–44cm	40–50cm	46–56cm	54–64cm
A		19–26cm	21–30cm	26–36cm	31–41cm	36–46cm
Black	Regular	1401-BKR	1402-BKR	1403-BKR	1404-BKR	1405-BKR
	Tall	1401-BKT	1402-BKT	1403-BKT	1404-BKT	1405-BKT
Beige	Regular	1411-BKR	1412-BKR	1413-BKR	1414-BKR	1415-BKR
	Tall	1411-BKT	1412-BKT	1413-BKT	1414-BKT	1415-BKT

Tall garments ship with Regular length Compreboot. If Long Compreboot is required, purchase Compreflex Standard Calf and order desired Compreboot separately.

REQUIRED MEASUREMENTS



Compreflex Standard – Calf Sizing Chart (A–C)

		Small	Medium	Large	X Large	XX Large
C		29–39cm	34–44cm	40–50cm	46–56cm	54–64cm
A		19–26cm	21–30cm	26–36cm	31–41cm	36–46cm
Black	Regular	1401-NF-BKR	1402-NF-BKR	1403-NF-BKR	1404-NF-BKR	1405-NF-BKR
	Tall	1401-NF-BKT	1402-NF-BKT	1403-NF-BKT	1404-NF-BKT	1405-NF-BKT
Beige	Regular	1411-NF-BKR	1412-NF-BKR	1413-NF-BKR	1414-NF-BKR	1415-NF-BKR
	Tall	1411-NF-BKT	1412-NF-BKT	1413-NF-BKT	1414-NF-BKT	1415-NF-BKT



For a PDF of the product ordering form, scan the QR code or visit sigvaris.group/mceforms

Compreflex Transition

CALF

20–50mmHg



Colors



Black



Beige

When to Use

- Patient requires a compressive liner with 10–15mmHg in the foot and ankle
- Ability to wear standard footwear over liner is desired

Ideal for

- Chronic Venous Disease
- Chronic Venous Insufficiency (CVI) including, but not limited to: ulcer due to venous stasis
- Lymphedema - Active and Maintenance
- Non-specific or post-surgical edema

Billable under Medicare code
6545-AW while wound is active



Transition Liner

10–15 mmHg of mild
compression in the foot
and ankle
(see page 55 for details)



Accutab Devices

Accutab Devices
(visit website for details)

Compreflex Complete

CALF

20–50mmHg



Colors



Black



Beige

When to Use

- Patient requires a compressive liner with 10–15mmHg in the foot, ankle, and calf
- Ability to wear standard footwear over liner is desired

Ideal for

- Chronic Venous Disease
- Chronic Venous Insufficiency (CVI) including, but not limited to: ulcer due to venous stasis
- Lymphedema - Active and Maintenance
- Non-specific or post-surgical edema



Complete Liner

Mild compression
in foot, ankle, and calf
(see page 55 for details)



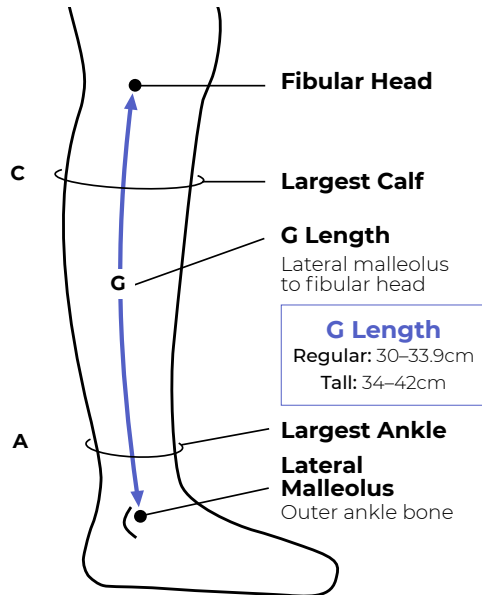
Accutab Devices

Accutab Devices
(visit website for details)

Medically Complex Edema

COMPREFLEX WRAPS

REQUIRED MEASUREMENTS



Compreflex Transition – Calf Sizing Chart (A–C)

		Small	Medium	Large	X Large	XX Large
	C	29–39cm	34–44cm	40–50cm	46–56cm	54–64cm
	A	19–26cm	21–30cm	26–36cm	31–41cm	36–46cm
Black	Regular	1401-UC-BKR	1402-UC-BKR	1403-UC-BKR	1404-UC-BKR	1405-UC-BKR
	Tall	1401-UC-BKT	1402-UC-BKT	1403-UC-BKT	1404-UC-BKT	1405-UC-BKT
Beige	Regular	1411-UC-BKR	1412-UC-BKR	1413-UC-BKR	1414-UC-BKR	1415-UC-BKR
	Tall	1411-UC-BKT	1412-UC-BKT	1413-UC-BKT	1414-UC-BKT	1415-UC-BKT



Compreflex Complete Calf

20–50mmHg
Medium Regular in Beige
1412-FC-BKR

Compreflex Complete – Calf Sizing Chart (A–C)

		Small	Medium	Large	X Large	XX Large
	C	29–39cm	34–44cm	40–50cm	46–56cm	54–64cm
	A	19–26cm	21–30cm	26–36cm	31–41cm	36–46cm
Black	Regular	1401-FC-BKR	1402-FC-BKR	1403-FC-BKR	1404-FC-BKR	1405-FC-BKR
	Tall	1401-FC-BKT	1402-FC-BKT	1403-FC-BKT	1404-FC-BKT	1405-FC-BKT
Beige	Regular	1411-FC-BKR	1412-FC-BKR	1413-FC-BKR	1414-FC-BKR	1415-FC-BKR
	Tall	1411-FC-BKT	1412-FC-BKT	1413-FC-BKT	1414-FC-BKT	1415-FC-BKT



For a PDF of the product ordering form, scan the QR code or visit sigvaris.group/mceforms

Coolflex
Standard
CALF

20–50mmHg



Color
Black

When to Use

- Varying ranges of adjustable resting compression are desired (20–50mmHg)
- No compression in the liner is desired
- Simplified one-handed or lateral donning is desired
- More breathable fabric is desired
- Desire to select separate foot piece

Ideal for

- Chronic Venous Disease
- Chronic Venous Insufficiency (CVI) including, but not limited to: ulcer due to venous stasis
- Fragile, sensitive skin
- Well-managed Lymphedema
- Lipedema

One-Handed Donning

Spacer Fabric is highly breathable for cool-wearing comfort

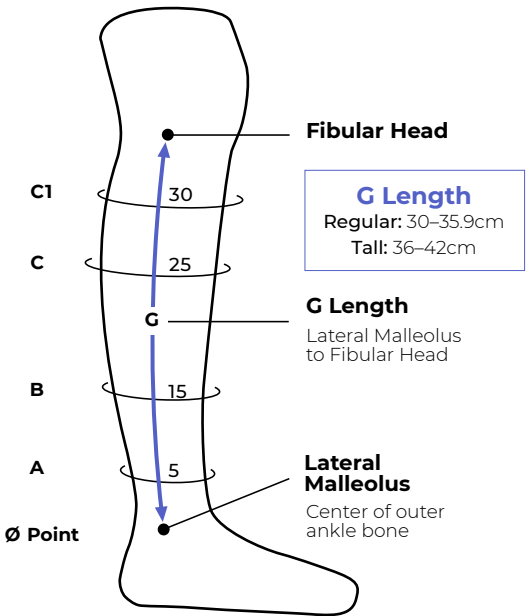
Durable metal hook closures for maximum strength and durability

Basic Liner

Non-Compressive
(see page 55 for details)



Coolflex Standard Calf Sizing Chart (A–C1)					
SIZE	Small	Small Max	Medium/ Large	Medium / Large Max	X Large / XX Large
C1	28–39cm	35–50cm	34–50cm	45–64cm	45–64cm
C	28–39cm	35–50cm	34–50cm	45–64cm	45–64cm
B	23–33cm	27–38cm	29–43cm	35–49cm	37–54cm
A	16–26cm	16–26cm	23–33cm	23–33cm	30–42cm
Left					
Regular	2101-NF-BKR-L	2101-NF-BMR-L	2103-NF-BKR-L	2103-NF-BMR-L	2105-NF-BKR-L
Tall	2101-NF-BKT-L	2101-NF-BMT-L	2103-NF-BKT-L	2103-NF-BMT-L	2105-NF-BKT-L
Right					
Regular	2101-NF-BKR-R	2101-NF-BMR-R	2103-NF-BKR-R	2103-NF-BMR-R	2105-NF-BKR-R
Tall	2101-NF-BKT-R	2101-NF-BMT-R	2103-NF-BKT-R	2103-NF-BMT-R	2105-NF-BKT-R



Medically Complex Edema

COOLFLEX AND LINERS

Basic Liner

Non-compressive

Features

- Non-compressive liner for the protection of the skin
- Antimicrobial wash for bacteriostatic properties and odor control
- Flat seams for added comfort
- Available in Heathered Silver color only

Size: One size fits all	
Pair	10 Pair Pack
1700 - NK1	1700 - NKC
Included With Compreflex Standard Calf & Foot Compreflex Standard Calf	



Transition Liner

10-15mmHg

Features

- Mild compression in foot and ankle only
- Antimicrobial wash for bacteriostatic properties and odor control
- Extra thick sole from toe to heel for added comfort
- Available in Black and Beige

Transition Liner Sizing Chart (Included with Compreflex Transition)

SIZE	Ankle Circ. (A)	Calf Circ. (C)	Women's Shoe	Men's Shoe	Pair (Black)	Pair (Beige)
Small	19-26cm	29-39cm	<7½	<6½	1601-CK	1611-CK
Medium	21-30cm	34-44cm	7.5-9.5	6.5-8.5	1602-CK	1612-CK
Large	26-36cm	40-50cm	10-12	9-11	1603-CK	1613-CK
X Large	31-41cm	46-56cm	12.5-15	11.5-14	1604-CK	1614-CK
XX Large	36-46cm	54-64cm	12.5-15	11.5-14	1605-CK	1615-CK



Complete Liner

10-15mmHg

Features

- Mild compression in foot and ankle with graduated compression in calf
- Antimicrobial wash for bacteriostatic properties and odor control
- Extra thick sole from toe to heel for added comfort
- Available in Black and Beige

Complete Liner Sizing Chart (Included with Compreflex Complete)

SIZE	Ankle Circ. (A)	Calf Circ. (C)	Women's Shoe	Men's Shoe	Pair (Black)	Pair (Beige)
Small	19-26cm	29-39cm	<7½	<6½	1601-CK-F1	1611-CK-F1
Medium	21-30cm	34-44cm	7.5-9.5	6.5-8.5	1602-CK-F1	1612-CK-F1
Large	26-36cm	40-50cm	10-12	9-11	1603-CK-F1	1613-CK-F1
X Large	31-41cm	46-56cm	12.5-15	11.5-14	1604-CK-F1	1614-CK-F1
XX Large	36-46cm	54-64cm	12.5-15	11.5-14	1605-CK-F1	1615-CK-F1



Compreboot Lite Foot

Variable compression



Features

- Ultra-thin profile that easily fits into most footwear
- Highly adjustable design may be trimmed to fit
- Provides mild therapeutic compression

Color



Black



Compreboot Standard Foot

Variable compression



Features

- Four-way stretch for firm compression around ankle
- Ideal for mild to moderate chronic edema²
- Low stretch material conforms to foot shape

Colors



Black



Beige



Compreboot Plus Foot

Variable compression



Features

- Chip foam lining creates high / low pressure ridges
- Removable gripper patches provide traction
- Provides moderate therapeutic compression

Color



Black



Coolflex Standard Foot

Variable compression



Features

- Low profile design allows boot to fit in most footwear*
- Spacer Fabric is highly breathable for cool-wearing comfort
- Durable metal clasps for closure

Color



Black



Foot compression garments are pictured with the Basic Liner. Basic Liner is not included.

* Data on file

Medically Complex Edema

FOOT COMPRESSION WEAR

Circumference

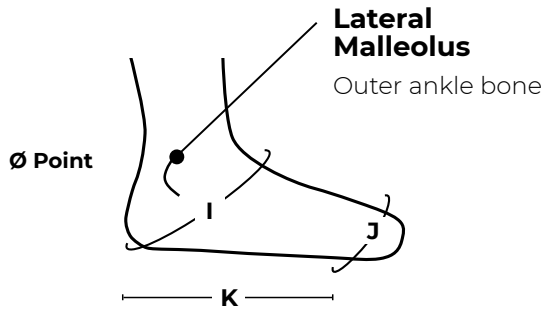
Left Right

I _____

J _____

Length

K _____



K: Measure **medial** length from heel to 1st metatarsal head

Measuring Instructions

Foot Size:

I: Measure circumference of ankle bend and heel

J: Measure circumference across metatarsal heads

K: Measure length from heel to 1st metatarsal head

Compreboot Lite Foot Size Chart (I-K)
(Available in Black Only)

	Small / Medium / Large		X Large / XX Large	
	Regular	Long	Regular	Long
I	28-36cm	28-36cm	≤44cm	≤44cm
J	22-26cm	22-26cm	≤33cm	≤33cm
K	14-18cm	19-23cm	20-22cm	25-27cm
Black	1803-BLR	1803-BLL	1805-BLR	1805-BLL

Compreboot Standard Foot Size Chart (I-K)

	Small		Medium / Large		X Large / XX Large	
	Regular	Long	Regular	Long	Regular	Long
I	28-36cm	28-36cm	≤39cm	≤39cm	≤44cm	≤44cm
J	22-26cm	22-26cm	≤30cm	≤30cm	≤33cm	≤33cm
K	14-18cm	19-23cm	18-20cm	23-25cm	20-22cm	25-27cm
Black	1801-BTR	1801-BTL	1803-BTR	1803-BTL	1805-BTR	1805-BTL
Beige	1811-BTR	1811-BTL	1813-BTR	1813-BTL	1815-BTR	1815-BTL

Compreboot Plus Foot Size Chart (I-K)
(Available in Black Only)

	Small		Medium / Large		X Large / XX Large	
	Regular	Long	Regular	Long	Regular	Long
I	28-36cm	28-34cm	≤39cm	≤39cm	≤44cm	≤44cm
J	22-26cm	22-25cm	≤30cm	≤28cm	≤33cm	≤33cm
K	14-18cm	19-23cm	18-20cm	23-25cm	20-22cm	25-27cm
Black	1801-BPR	1801-BPL	1803-BPR	1803-BPL	1805-BPR	1805-BPL

Coolflex Standard Foot Size Chart (I-K)
(Available in Black Only)

	Small		Medium / Large		X Large / XX Large	
	Regular	Long	Regular	Long	Regular	Long
I	28-38cm	28-38cm	30-43cm	30-43cm	34-49cm	34-49cm
J	22-26cm	22-26cm	25-30cm	25-30cm	28-33cm	28-33cm
K	14-18cm	19-21cm	18-20cm	21-23cm	20-22cm	23-25cm
Left						
Black	2101-BTR-L	2101-BTL-L	2103-BTR-L	2103-BTL-L	2105-BTR-L	2105-BTL-L
Right						
Black	2101-BTR-R	2101-BTL-R	2103-BTR-R	2103-BTL-R	2105-BTR-R	2105-BTL-R

Compreflex Strap Extender

- Provides up to 10cm of additional circumferential size range to Compreflex calf wraps
- Detaches easily
- Potential inexpensive solution for patients outside of standard size ranges of Compreflex calf wraps

	1 Unit	10 Unit Pack
Black	1401-SE1	1401-SEB
Beige	1411-SE1	1411-SEB



For a PDF of the product ordering form, scan the QR code or visit sigvaris.group/mceforms



The best choice for
**conventional,
precise-sized,
comfortable,
and affordable
compression**



DYNAVEN

Conventional Compression

Why choose **Dynaven**?

Created for specific medical needs, including:

- Affordable compression without compromising quality
- Support for legs following a vein procedure
- Wide range of compression levels and sizes

SIGVARIS
GROUP

970 Opaque WOMEN & MEN

Dynaven socks and hosiery provide opaque coverage and support for legs following a vein procedure or for everyday wear.

Features

- Glide on & off easily
- Reinforced heel area
- Roomy toe area
- Wide top bands

Compression

15–20mmHg
20–30mmHg
30–40mmHg



Silicone grip-top band



Light Beige



Black

920 Opaque MEN

Dynaven opaque ribbed socks provide support for legs following a vein procedure or for everyday wear.

Features

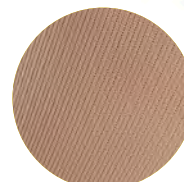
- Ribbed sock style
- Glide on & off easily
- Roomy toe area
- Wide top bands

Compression

15–20mmHg
20–30mmHg
30–40mmHg



Silicone grip-top band



Light Beige



Black

Sizing

Ankle circumference	small 7"-8.5" (18-21.5cm)		medium 8.5"-10" (21.5-25.5cm)		large 10"-11.5" (25.5-29cm)		x-large 11.5"-13" (29-33cm)	
Calf circumference	small 11"-15.5" (28-39cm)		medium 12.5"-17.5" (31.5-45cm)		large 14"-20" (35.5-51cm)		x-large 16"-23" (40.5-58cm)	
Calf length	short ≤16" (41cm)	long >16" (41cm)	short ≤16" (41cm)	long >16" (41cm)	short ≤16" (41cm)	long >16" (41cm)	short ≤16" (41cm)	long >16" (41cm)
Thigh circumference	small 18"-26" (45.5-66cm)		medium 19"-28.5" (48-73cm)		large 20.5"-33" (52-84cm)		x-large 24"-36" (61-92cm)	
Leg length	short ≤28.5" (72cm)	long >28.5" (72cm)	short ≤28.5" (72cm)	long >28.5" (72cm)	short ≤28.5" (72cm)	long >28.5" (72cm)	short ≤28.5" (72cm)	long >28.5" (72cm)
Hip circumference guidelines	<45.5" (115cm)		<51" (129.5cm)		<60.5" (154cm)		N/A	
Size	SS	SL	MS	ML	LS	LL	XS*	XL*

Women's shoe sizes: Short 5.5-9.5 Long 8-12

Men's shoe sizes: Short 7-11 Long 9.5-14

* XS & XL not available in Dynaven pantyhose styles

Fiber contents

75% Nylon, 25% Spandex
(Content may vary by style)
Not made with natural rubber latex

Styles and colors

Closed toe = ● Open toe = ○	Light beige (66)	Black (99)
970 Women's opaque calf, calf w/grip-top, thigh w/grip-top, and pantyhose (C, C/S, N, & P)	●	●
970 Men's opaque thigh w/grip top (N)	●	●
970 Unisex opaque calf, calf w/grip-top, thigh w/grip-top, and pantyhose (CO, CO/S, NO, and PO)**	○	○

** Dynaven unisex opaque pantyhose only available in 20-30mmHg and 30-40mmHg

Product code example: 972CSLW66

Dynaven opaque 20-30mmHg closed-toe calf, small long for women, in light beige.

Series	mmHg level	Style	Size	Gender/open toe	Color
97	2	C	SL	W	66

Sizing

Ankle circumference	small 7"-8.5" (18-21.5cm)		medium 8.5"-10" (21.5-25.5cm)		large 10"-11.5" (25.5-29cm)		x-large 11.5"-13" (29-33cm)	
Calf circumference	small 11"-15.5" (28-39cm)		medium 12.5"-17.5" (31.5-45cm)		large 14"-20" (35.5-51cm)		x-large 16"-23" (40.5-58cm)	
Calf length	short ≤16" (41cm)	long >16" (41cm)	short ≤16" (41cm)	long >16" (41cm)	short ≤16" (41cm)	long >16" (41cm)	short ≤16" (41cm)	long >16" (41cm)
Size	SS	SL	MS	ML	LS	LL	XS	XL

Men's shoe sizes: Short 7-11 Long 9.5-14

Styles and colors

Closed toe = ●	Light beige (66)	Black (99)
920 Men's opaque ribbed calf and calf w/grip-top (C & C/S)	●	●

Product code example: 922CMLM99

Dynaven opaque 20-30mmHg closed-toe calf, medium long for men, in black.

Series	mmHg level	Style	Size	Gender	Color
92	2	C	ML	M	99

Fiber contents

80% Nylon, 20% Spandex
Not made with natural rubber latex

980 Sheer WOMEN

Dynaven sheer hosiery offers medical grade compression and features sheer fabric for a fashionable look. Ideal for everyday wear, Dynaven sheer hosiery supports leg and vein health.

Features

- Sheer fabric for a fashionable look
- Glide on & off easily
- Lace silicone grip-top band for thigh w/grip-top styles
- Cotton-lined gusset for pantyhose styles

Compression

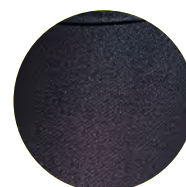
15–20mmHg
20–30mmHg



Silicone grip-top band



Beige



Black

960 Cushioned WOMEN & MEN

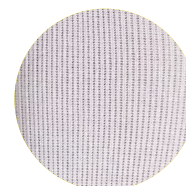
Dynaven Cushioned socks feature cushioned heel, sole, and toe areas. Ideal for everyday wear or following a vein procedure, the Dynaven Cushioned sock gives legs the support and comfort they need to go the distance.

Features

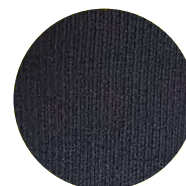
- Glide on & off easily
- Cushioned heel, sole, & toe areas
- Wide top bands
- Single sizing system for both men and women

Compression

15–20mmHg
20–30mmHg



White



Black

Sizing

Ankle circumference	small 7"–8.5" (18–21.5cm)		medium 8.5"–10" (21.5–25.5cm)		large 10"–11.5" (25.5–29cm)	
Calf circumference	small 11"–15.5" (28–39cm)		medium 12.5"–17.5" (31.5–45cm)		large 14"–20" (35.5–51cm)	
Calf length	short ≤16" (41cm)	long >16" (41cm)	short ≤16" (41cm)	long >16" (41cm)	short ≤16" (41cm)	long >16" (41cm)
Thigh circumference	small 18"–26" (45.5–66cm)		medium 19"–28.5" (48–73cm)		large 20.5"–33" (52–84cm)	
Leg length	short ≤28.5" (72cm)	long >28.5" (72cm)	short ≤28.5" (72cm)	long >28.5" (72cm)	short ≤28.5" (72cm)	long >28.5" (72cm)
Hip circumference guidelines	<45.5" (115cm)		<51" (129.5cm)		<60.5" (154cm)	
Size	SS	SL	MS	ML	LS	LL

Women's shoe sizes: Short 5.5–9.5 Long 8–12

Fiber contents

65% Nylon, 35% Spandex
(Content may vary by style)
Not made with natural rubber latex

Styles and colors

Closed toe = ● Open toe = ○	Beige (77)	Black (99)
980 Women's Sheer calf, thigh-high w/grip-top, and pantyhose (C, N, & P)*	●* ○	●* ○

* Dynaven sheer pantyhose only available in closed toe

Product code example: 982NSSW77

Dynaven sheer 20–30mmHg closed-toe thigh, small short for women, in beige.

Series	mmHg level	Style	Size	Gender/open toe	Color
98	2	N	SS	W	77

Sizing

Ankle circumference	small 7"–8.5" (18–21.5cm)		medium 8.5"–10" (21.5–25.5cm)		large 10"–11.5" (25.5–29cm)		x-large 11.5"–13" (29–33cm)	
Calf circumference	small 11"–15.5" (28–39cm)		medium 12.5"–17.5" (31.5–45cm)		large 14"–20" (35.5–51cm)		x-large 16"–23" (40.5–58cm)	
Calf length	short ≤16" (41cm)	long >16" (41cm)	short ≤16" (41cm)	long >16" (41cm)	short ≤16" (41cm)	long >16" (41cm)	short ≤16" (41cm)	long >16" (41cm)
Size	SS	SL	MS	ML	LS	LL	XS	XL

Women's shoe sizes: Short 5.5–9.5 Long 8–12

Men's shoe sizes: Short 7–11 Long 9.5–14

Fiber contents

82% Nylon, 18% Spandex
Not made with natural rubber latex

Styles and colors

Closed toe = ●	White (00)	Black (99)
960 Unisex cushioned calf (C)	●	●

Product code example: 961CLS00

Dynaven cushioned 15–20mmHg closed-toe calf, large short, in white.

Series	mmHg level	Style	Size	Color
96	1	C	LS	00



sigvaris

Accessories

Help yourself

Why choose **Accessories**?

Created for specific medical needs, including:

- Aid in putting on and removing stockings
- Stocking cleaning to maximize usage
- Adhesives and extra liners for added comfort

Gloves

Rubber Gloves – Ridged

The practical and protective way to apply and remove your compression stockings.



Package: 12 per Pack

Size	Product Code
Small	591R400S
Medium	591R400M
Large	591R400L
X-Large	591R400X

Package: Single Pair

Size	Product Code
Small	591RPRS
Medium	591RPRM
Large	591RPRL
X-Large	591RPRX

Glove Sizing Chart

Measure Circumference of the Hand at the Palm

6.5"–7" (16.5–18cm)	7.5"–8" (19–20.5cm)	8.5"–9" (21.5–23cm)	9.5"–10" (24–25.5cm)
Small	Medium	Large	X-Large



For more Sigvaris videos, including donning tips and product demonstrations, visit our YouTube channel: youtube.com/sigvarisgroupusa

Caution: Rubber Gloves contain natural rubber latex which may cause allergic reaction

Latex-Free Gloves

Gripping donning gloves recommended for use in a non-latex environment.



Package: 12 per Pack

Size	Product Code
Small	592R400S
Medium	592R400M
Large	592R400L
X-Large	592R400X

Package: Single Pair

Size	Product Code
Small	592RPRS
Medium	592RPRM
Large	592RPRL
X-Large	592RPRX

Donning Aids



Sim-Slide



Video: How to Use the Sim-Slide
To watch the video go to: bit.ly/SIGssyt

Sim-Slide

Size	Product Code
Small	587SLIDESM
Medium	587SLIDEMD
Large	587SLIDELG
X-Large	587SLIDEXL

Sizing Chart

For use with Open toe styles

Women's Shoe Size	≤4–6	6.5–8	8.5–9.5	≥10
Men's Shoe Size	≤3–4.5	5–6.5	7–8	≥8.5
Size	S	M	L	XL



Magnide On/Off



Video: How to Use the Magnide On/Off
To watch the video go to: bit.ly/SIGmofyt

Magnide On/Off

Size	Product Code
Medium	587MAGMD
Large	587MAGLG
X-Large	587MAGXL

Sizing Chart

For use with Closed toe styles

Women's Shoe Size	≤8.5	9–12	≥12.5
Men's Shoe Size	≤7.5	8–11	≥11.5
Size	M	L	XL*

*XL suitable for extra-wide feet

Accessories

Donning Aid



Cotton Underliner

10–15mmHg stocking. Can be used as an underlayer to protect fragile skin, secure wound dressings, to add 10–15mmHg of compression, or create an easy glide surface to aid in putting on and taking off compression stockings. For sizing, please refer to the Natural Rubber Calf sizing on page 37.

Package: 2 per pack

Size	Product Code
Small / Short	588USS
Small / Long	588USL
Medium / Short	588UMS
Medium / Long	588UML
Large-XL / Short	588ULS
Large-XL / Long	588ULL

Washing Solution



Washing Solution

Gentle washing solution specifically formulated to help maintain the quality of SIGVARIS GROUP compression socks and stockings. Also great for washing delicate garments!

Package Options

Contains	Product Code
Six 16 oz. Bottles (473ml)	586W900
One 16 oz. Bottle (473ml)	586W950
Twelve 2 oz. Bottles (60ml)	586W975
One 2 oz. Bottle (60ml)	586W985

Body Adhesive



IT STAYS!

A gentle roll-on body adhesive that washes off with water and may be used to hold compression garments in place against the skin. IT STAYS! is pliable and moves with the body.

Package Options

Contains	Product Code
Twelve 2 oz. Bottles (60ml)	581I300
One 2 oz. Bottle (60ml)	581I350



Donning Aids



Foot Slip

Comfortable applicator for use with open toe stockings.

Package: 6 per pack

Size	Product Code
One Size	580F200



Sigvaris DOFF N' DONNER

A soft device that allows you to quickly guide a compression sock or stocking up and down your leg or arm, making it simple to put on and remove all styles of graduated compression. It is perfect for both self-donning and caregiver use. Non-latex.

Size	Product Code
One Size	583D100



Sigvaris DOFF N' DONNER CONE

This loading device makes it easy to roll stockings onto the Sigvaris DOFF N' DONNER. The bottom of the base firmly attaches to most clean flat surfaces via suction.



Video: *How to Use the Sigvaris DOFF N' DONNER*
To watch the video go to: bit.ly/sigdnd

Size	Product Code
One Size	583D200

Caution: this product contains natural rubber latex which may cause allergic reactions



MELANY

The donning and doffing device for compression stockings in case of limited mobility.

Sizing Chart				
Size	X-SMALL	SMALL	MEDIUM	LARGE
Calf Circumference	10"-12" (25-30cm)	12"-15" (30-38cm)	15"-18" (38-46cm)	18"-22" (46-56cm)
Product Code	579MXS	579MSM	579MMD	579MLG

Measure at the widest part of the calf



Video: *How to Use the MELANY*
To watch the video go to: goto.sigvaris.com/bbiMdz

⚠ WARNING: This product can expose you to chemicals, including Carbon black, which are known to the State of California to cause cancer. For more information go to www.P65Warnings.ca.gov.

Symptoms & Indications

Symptoms / Indications	Compression Level at the Ankle
<ul style="list-style-type: none"> Tired, achy legs Occupational or evening edema Leg discomfort from long hours of standing or sitting Prevent varicosities & swelling during pregnancy Preventative for legs predisposed to risk Reduce swelling during travel Prevent DVT during travel 	15–20mmHg
<ul style="list-style-type: none"> Patient with diabetes who experiences edema (see Cautions below) 	18–25mmHg
<ul style="list-style-type: none"> Heavy, fatigued, aching legs Mild edema in lower extremities Mild varicosities with minimal edema Mild varicosities during pregnancy Lymphedema upper extremities Post-procedure of small veins Prevention or management of DVT 	20–30mmHg
<ul style="list-style-type: none"> Moderate varicosities with mild to moderate edema (also during pregnancy) Post-procedure of larger veins to maintain treatment success CEAP C3 (edema), C4 (skin changes without ulceration), C5 (skin changes with healed ulceration), C6 (skin changes with active and / or recurrent ulcerations) Management and treatment of DVT or Post-Thrombotic Syndrome Superficial phlebitis Lymphedema after decongestant therapy to maintain reduction Orthostatic / postural hypotension Post-fracture, post-traumatic edema <p><i>Note: A prescription is recommended for stockings with the indications of 30mmHg or higher</i></p>	30–40mmHg
<ul style="list-style-type: none"> Lymphedema after decongestant therapy to maintain reduction Post-Thrombotic Syndrome Varicosities and / or edema 	40mmHg or higher
<ul style="list-style-type: none"> Severe arterial insufficiency, intermittent claudication, ischemia Uncontrolled congestive heart failure 	Contraindications
<ul style="list-style-type: none"> Skin sensitivities or allergies Advanced neuropathy with sensory loss in leg or foot Diabetes with arterial compromise Confinement to bed or non-ambulatory use unless otherwise prescribed by the physician Eczema, hypodermatitis, dermatosclerosis, dermatitis 	Cautions
<p>No liability accepted for non-observance of contraindications and cautions. Fronek HS, Bergan JJ, et al. The Fundamentals of Phlebology: Venous Disease for Clinicians. 2004. pg 151. Phlebology 2008. Compression therapy of the extremities. Partsch, Rabe, Stemmer. ISBN: 2.85480.770.7. Blaettner, et al. Leg Symptoms of Healthy People and Their Treatment with Compression Hosiery.</p>	

Glossary of Terms

Term	Definition	Sigvaris Usage
Chronic Venous Disease (CVD)	A disease state comprised of a wide range of disorders including tired, achy legs, varicose veins, Chronic Venous Insufficiency (CVI), skin issues, and venous leg ulcers (open and healed).	SIGVARIS GROUP manufactures Medical and Well Being products to help reduce the risk of, improve symptoms of, and provide treatment for CVD.
Double-Covered Yarn	Spandex fibers are covered twice with yarn to prevent bare spandex from touching the skin for improved wearing comfort.	Used in nearly all SIGVARIS GROUP graduated compression socks and hosiery to create products that are easy to put on and take off, while also providing greater comfort.
Deep Vein Thrombosis (DVT)	A blood clot in a deep vein, most commonly in the lower leg or thigh.	SIGVARIS GROUP cares about DVT prevention. Clinical evidence supports the use of graduated compression to help prevent DVTs and the more serious complication of PE (Pulmonary Embolism), which can be life-threatening.
Graduated Compression v. Anti-Embolism	Graduated compression is for ambulatory patients, whereas anti-embolism stockings are for bedridden patients.	SIGVARIS GROUP offers true graduated compression, meaning products are tightest at the ankle and decrease in pressure going up the leg to help improve circulation.
Hypoallergenic	Designed to minimize the chance of an allergic reaction.	SIGVARIS GROUP offers non-latex products and cotton fabrics for those with sensitive skin and allergies. Also, many SIGVARIS GROUP accessories are designed for consumers with sensitive skin.
ISO Certified	The International Organization for Standardization, a worldwide federation of national standards bodies from over 130 countries. The United States member body is identified as ANSI (American National Standards Institute).	SIGVARIS GROUP follows ISO Standard 13485:2016 for our graduated compression products manufactured in North and South America. For our MCE products manufactured in Holland, Michigan, we follow ISO 9001.
Microfiber	An extremely fine synthetic fiber knitted into textiles with the texture and drape of natural-fiber fabric. This fabric has excellent breathability.	Used to create products with a soft and comfortable feel. Find this fiber in 840 Soft Opaque, 830, 143 & 183 Microfiber Patterns, and 820 Microfiber.
mmHg (Millimeters of Mercury)	Defined as the extra pressure generated by a column of mercury one millimeter high; the same unit of measurement used for blood pressure.	SIGVARIS GROUP products are offered in several ranges of compression levels based on this measurement.
Merino Wool	Merino is the softest and finest wool available in the world and is inherently itch-free.	SIGVARIS GROUP uses this premium wool yarn to create soft products that are thermoregulating for use in all seasons. Used in 422 Thermoregulating Wool, 421 MERINO OUTDOOR SOCKS, and 152 & 192 ALL-SEASON MERINO WOOL.
Sea Island Cotton	Sea Island Cotton is the rarest cotton in the world and represents the finest in cotton softness.	SIGVARIS GROUP uses the highest-quality yarns in the industry to create products that are best in class. Look for this fine quality cotton in our 220 Sea Island and 151 & 191 SEA ISLAND COTTON SOCKS.
Sensinnov	A patented SIGVARIS silicone top band that gently grips the skin and keeps the band in place all day.	This top band is featured in 780 Sheer, 840 Soft Opaque, and 820 Microfiber to help keep thigh stockings in place all day long.
Supima Cotton SUPIMA® <small>WORLD'S FINEST COTTONS</small>	Supima accounts for only about three percent of annual cotton production in the United States. Its fineness and longer staple length make it a premium cotton fiber.	SIGVARIS GROUP uses this premium cotton yarn in the 230 Cotton, 220 Sea Island and 151 & 191 SEA ISLAND COTTON SOCKS, 146 & 186 CASUAL COTTON, and 360 Cushioned Cotton products, making them comfortable and ideal for those with sensitive skin.

Dealer Portal & Education

SIGVARIS GROUP Dealer Portal

The SIGVARIS GROUP Dealer Portal is your online location for securely ordering SIGVARIS GROUP products and managing your account. Place and track your orders, review order history, chat with Customer Care, and much more at **sigvaris-online.com**.

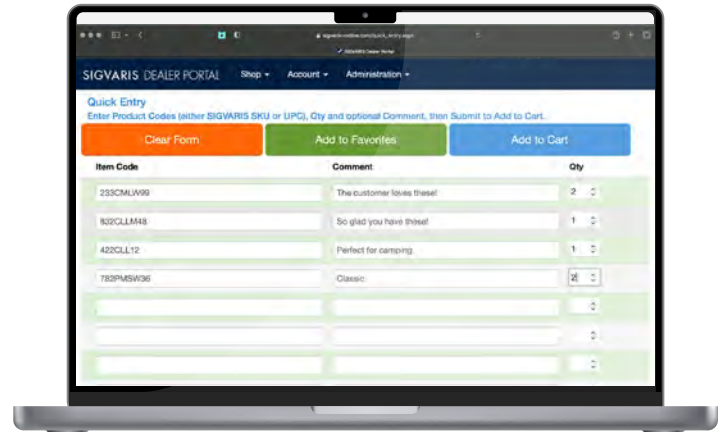
Dealer Portal benefits

- **24/7** access-order any time!
- Sizing Wizard
- Three ways to securely place an order online: Catalog, Quick Entry or Excel Upload
- Access to order history and tracking
- Shipping options including drop ship and easy access to an address table for quick shipment of reorders
- Check your account balance and print invoices
- Credit card payments
- New product launch information
- Current promotions
- Inelastic compression order forms

Email **sigvariscares@sigvaris.com** and you will receive your active account within one business day!

Can't find the product you're searching for?

Type the product SKU in the search function and select for ordering.



SIGVARIS GROUP Education & Training



SIGVARIS GROUP has several new and exciting educational opportunities for 2023 to help you get a leg up on leg health knowledge. These opportunities include online learning, webinars, and custom training sessions to educate fitters, clinicians, and therapists. Additionally, we offer a variety of courses with opportunities to earn continuing education credits.

Learn more at **sigvariseducation.com**.

Become a SIGVARIS Certified Fitter!

Contact your Territory Manager
or email **medical.education@sigvaris.com**

**SIGVARIS
GROUP**

Notes

[illegible]

SIGVARIS, INC.
1119 Highway 74 South
Peachtree City, GA 30269
Tel 800-322-7744
sigvaris.com

**SIGVARIS
GROUP**

Sigvaris, Inc.
1119 Highway 74 South
Peachtree City, GA 30269

ORDERING

Online: **sigvaris-online.com**

Call: **1-800-322-7744, ext. 1**

Fax: **1-800-481-5488**

Customer Care:

Monday–Friday, 8am–7pm (EST)

QUALITY STANDARD

Peachtree City, GA:

Certified Quality System ISO 13485

FDA Registered

Holland, MI:

Quality System ISO 9001

FDA Registered

Products are inspected based
on specifications and guidelines.

Sigvaris, SIGVARIS GROUP, DYNAVEN, Doff N' Donner, MELANY, Sensinnov, Compreflex, Coolflex, Compreboot, and Accutab are registered trademarks of SIGVARIS AG, CH-9014 St.Gallen/Switzerland, in many countries worldwide.
© Copyright 2023 SIGVARIS, Inc.

Lycra is a registered trademark of INVISTA.

Supima is a registered trademark of the Supima Association of America Corporation.

NILIT is a registered trademark of Nilit. All rights reserved.

drirelease is copyright ©2023 *drirelease*. *drirelease* is an Optimer Brands company.
All rights reserved.

Sim-Slide and Magnide are registered trademarks of Arion Holding B.V.

® IT STAYS is a registered trademark of New Horizons Diversified Interests.

SIGVARIS
GROUP

ORDERING

Online
sigvaris-online.com

Call
1-800-322-7744, ext. 1

Fax
1-800-481-5488

CUSTOMER CARE

Monday–Friday
8am–7pm (EST)

Visit us on the web:

sigvaris.com



SIGVARIS GROUP USA